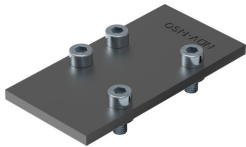


**Cover plate**  
**NDV-1-ISO**  
Part number: 9489



 [General operating condition](#)

**Data sheet**

Feature	Value
Based on standard	ISO 5599-1
Conforms to standard	ISO 5599-1
Operating medium	Compressed air to ISO 8573-1:2010 [7:-:-]
Note on operating and pilot medium	Lubricated operation possible (in which case lubricated operation will always be required)
LABS (PWIS) conformity	VDMA24364-B1/B2-L
Product weight	113 g
Material sub-base	Steel