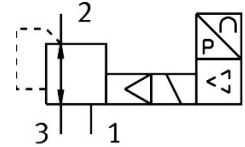


# Precision pressure regulator MS6-LRP-1/2-PI10-VS

Part number: 8203862

**FESTO**



[General operating condition](#)

## Data sheet

Feature	Value
Size	6
Series	MS
Mounting position	optional
Design	Piloted precision pressure regulator
Controller function	Output pressure constant With secondary venting
Symbol	00995303
Operating pressure	0.6 MPa ... 1.1 MPa
Operating pressure	6 bar ... 11 bar
Pressure regulation range	0.1 bar ... 10 bar
Max. pressure hysteresis	0.05 bar
Standard nominal flow rate (standardised to DIN 1343)	9000 l/min
Operational voltage range DC	21.6 V ... 26.4 V
Max. electrical power consumption	4.2 W
Max. current consumption	0.16 A
Nominal operating voltage DC	24 V
Residual ripple	10 %
Signal range analogue input	4 - 20 mA
CE mark (see declaration of conformity)	To EU EMC Directive In accordance with EU RoHS Directive
UKCA marking (see declaration of conformity)	To UK instructions for EMC To UK RoHS instructions
Operating medium	Compressed air to ISO 8573-1:2010 [7:4:4] Inert gases
Note on operating and pilot medium	Ester oil < 0.1mg/m <sup>3</sup> , according to ISO 8573-1:2010 [---:2] Lubricated operation not possible
Corrosion resistance class CRC	2 - Moderate corrosion stress
LABS (PWIS) conformity	VDMA24364-B1/B2-L
Storage temperature	-10 °C ... 60 °C
Media temperature	10 °C ... 50 °C
Ambient temperature	0 °C ... 60 °C
Product weight	800 g
Type of mounting	Either: In-line installation With accessories
Pneumatic connection, port 1	G1/2
Pneumatic connection, port 2	G1/2

Feature	Value
Pneumatic connection, port 3	G1/4
Note on materials	RoHS-compliant
Material seals	NBR
Material housing	Aluminium