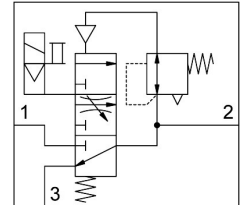
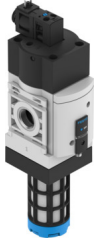


Soft-start/quick exhaust valve MS6-EDE-1/2-V24-AD7-B

Part number: 8201358

FESTO



[PDF](#) General operating condition

Data sheet

| Feature | Value |
|--|--|
| Size | 6 |
| Grid dimension | 62 mm |
| Exhaust-air function | Without flow control option |
| Type of actuation | Electric |
| Mounting position | optional |
| Selection of additional functions | With silencer |
| Series | MS |
| Manual override | Detenting Non-detenting |
| Design | Poppet valve, electrically actuated |
| Type of reset | Mechanical spring |
| Type of piloting | Pilot actuated |
| Pilot air supply | Internal |
| Symbol | 00997398 |
| Valve function | 3/2-way, closed, monostable |
| lap | Underlap |
| Pressure gauge (ANALOG) or Pressure display (DIGITAL) | With pressure sensor with LCD display |
| Switching position indicator | With accessories |
| Operating pressure | 0.3 MPa ... 0.7 MPa |
| Operating pressure | 3 bar ... 7 bar |
| b value | 0.46 |
| C value | 23.9 l/sbar |
| Standard nominal flow rate, exhaust 0.6->0 MPa (6->0 bar, 87->0 psi) | 4000 l/min |
| Standard nominal flow rate (standardised to DIN 1343) | 5000 l/min |
| Switch-on time | 31 ms |
| Characteristic coil data | 24 V DC: 2.3 W |
| Permissible voltage fluctuations | +/- 10 % |
| Operating medium | Compressed air to ISO 8573-1:2010 [7:4:4] |
| Note on operating and pilot medium | Lubricated operation possible (in which case lubricated operation will always be required) |
| Corrosion resistance class CRC | 1 - Low corrosion stress |
| LABS (PWIS) conformity | VDMA24364-B1/B2-L |
| Cleanroom class | Class 7 according to ISO 14644-1 |
| Storage temperature | -10 °C ... 60 °C |

| Feature | Value |
|------------------------------|----------------------------|
| Media temperature | 0 °C ... 50 °C |
| Degree of protection | IP65 |
| Ambient temperature | 0 °C ... 50 °C |
| Product weight | 499 g |
| Electrical connection | Type C To EN 175301-803 |
| Signal status display | With accessories |
| Type of mounting | Via wall/surface bracket |
| Pneumatic connection, port 1 | G1/2 |
| Pneumatic connection, port 2 | G1/2 |
| Pneumatic connection, port 3 | G1/2 |
| Note on materials | RoHS-compliant |
| Material seals | HNBR NBR |
| Material housing | PA-reinforced |