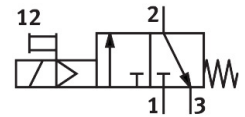
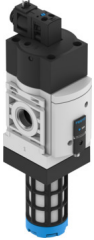



**On/off valve**  
**MS6-EE-1/2-V24-AD7-B**  
Part number: 8201357

**FESTO**



 General operating condition

**Data sheet**

Feature	Value
Series	MS
Size	6
Grid dimension	62 mm
Design	Poppet valve, electrically actuated
Type of actuation	Electric
Exhaust-air function	Without flow control option
Manual override	Detenting Non-detenting
Type of reset	Mechanical spring
Type of piloting	Pilot actuated
Symbol	00991008
Valve function	3/2-way, closed, monostable
Pressure gauge (ANALOG) or Pressure display (DIGITAL)	With pressure sensor with LCD display
Operating pressure	0.3 MPa ... 0.7 MPa
Operating pressure	3 bar ... 7 bar
lap	Underlap
C value	21.33 l/sbar
b value	0.52
Standard nominal flow rate (standardised to DIN 1343)	5000 l/min
Standard nominal flow rate, exhaust 0.6-0 MPa (6-0 bar, 87-0 psi)	4000 l/min
Characteristic coil data	24 V DC: 2.3 W
Permissible voltage fluctuations	+/- 10 %
Switch-on time	29 ms
Operating medium	Compressed air to ISO 8573-1:2010 [7:4:4]
Note on operating and pilot medium	Lubricated operation possible (in which case lubricated operation will always be required)
Corrosion resistance class CRC	1 - Low corrosion stress
Note on materials	RoHS-compliant
LABS (PWIS) conformity	VDMA24364-B1/B2-L
Cleanroom class	Class 7 according to ISO 14644-1
Media temperature	0 °C ... 50 °C
Degree of protection	IP65
Ambient temperature	0 °C ... 50 °C
Type of mounting	Via wall/surface bracket
Mounting position	optional
Switching position indicator	With accessories

Feature	Value
Product weight	490 g
Pneumatic connection, port 1	G1/2
Pneumatic connection, port 2	G1/2
Pneumatic connection, port 3	G1/2
Pilot air supply	Internal
Electrical connection	Type C To EN 175301-803
Signal status display	With accessories
Selection of additional functions	With silencer
Material seals	HNBR NBR
Material housing	PA-reinforced