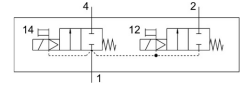



Solenoid valve VSVA-B-T22C-MH-D1-F8

Part number: 8198565

FESTO



 General operating condition

Data sheet

Feature	Value
Valve function	2x2/2-way, monostable, closed
Type of actuation	Electric
Construction width	42 mm
Nominal flow rate standardised according to ISO 8778	1700 l/min
pneumatic working port	Sub-base size 1 to ISO 5599-1
Operating pressure	0.3 MPa ... 1 MPa
Operating pressure	3 bar ... 10 bar
Design	Piston gate valve
Type of reset	Mechanical spring
Degree of protection	IP65 NEMA 4
Nominal size	8 mm
Grid dimension	43 mm
Exhaust-air function	Via individual sub-base
Sealing principle	Soft
Mounting position	optional
Conforms to standard	ISO 5599-1
Manual override	Non-detenting
Type of piloting	Pilot actuated
Pilot air supply	Internal
Flow direction	Non-reversible
Symbol	00995472
lap	Overlap
Pilot pressure	0.3 MPa ... 1 MPa
Pilot pressure	3 bar ... 10 bar
Suitability for vacuum	no
b value	0.18
C value	6.503 l/sbar
Flow rate of valve	1500 l/min
Flow rate of valve on individual sub-base	1300 l/min
Valve flow rate, pneumatically linked, flow optimized	1500 l/min
Flow rate of pneumatically interlinked valve	1300 l/min
Max. switching frequency	5 Hz
Switching time off	28 ms
Switching time on	18 ms
Duty cycle	100%

Feature	Value
Operating medium	Compressed air to ISO 8573-1:2010 [7:4:4]
Note on operating and pilot medium	Lubricated operation possible (in which case lubricated operation will always be required)
LABS (PWIS) conformity	VDMA24364-B1/B2-L
Media temperature	-10 °C ... 50 °C
Relative air humidity	0 - 90%
Sound pressure level	85 dB(A)
Pilot medium	Compressed air to ISO 8573-1:2010 [7:4:4]
Ambient temperature	-10 °C ... 50 °C
Max. tightening torque for valve mounting	1 Nm
Product weight	400 g
Type of mounting	On sub-base
Pilot air port 12	Sub-base size 1 to ISO 5599-1
Pilot air port 14	Sub-base size 1 to ISO 5599-1
Pneumatic connection, port 1	Sub-base size 1 to ISO 5599-1
Pneumatic connection, port 2	Sub-base size 1 to ISO 5599-1
Pneumatic connection, port 3	Sub-base size 1 to ISO 5599-1
Pneumatic connection, port 4	Sub-base size 1 to ISO 5599-1
Pneumatic connection, port 5	Sub-base size 1 to ISO 5599-1
Pilot control interface	To ISO 15218
Note on materials	RoHS-compliant
Material seals	NBR
Material housing	Die-cast aluminium
Material screws	Steel