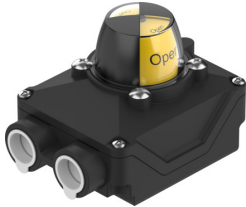


Limit switch box SRBK-CA5-YR90-MW-22A-1W-C2

Part number: 8182183

FESTO



 [General operating condition](#)

Data sheet

Feature	Value
CE mark (see declaration of conformity)	To EU EMC Directive To EU Low Voltage Directive In accordance with EU RoHS Directive
UKCA marking (see declaration of conformity)	To UK instructions for EMC To UK RoHS instructions To UK regulations for electrical equipment
Certificate issuing authority	Eurocert. SIL202587141
Note on materials	RoHS-compliant
Safety Integrity Level (SIL)	Safety Integrity Level 3
Measured variable	Position
Measuring principle	Mechanical/electrical
Sensing range	0 deg ... 90 deg
Ambient temperature	-20 °C ... 70 °C
Switching output	Contacting
Switching element function	Toggle switch, single-pole
Max. switching output voltage DC	30 V
Max. output current AC	3000 mA
Max. output current DC	1000 mA
Operational voltage range AC	0 V ... 230 V
Operational voltage range DC	0 V ... 30 V
Microswitch type	Omron SS-5
Electrical connection	Screw terminal
Electrical connection 1, connection type	Terminal strip
Electrical connection 1, cable outlet	Straight
Electrical connection 1, design	Angular
Electrical connection 1, connector system	Screw terminal
Electrical connection 1, number of connections/cores	10
Connectable nominal cross section conductor	0.25 mm ² ... 2.5 mm ²
Cable fitting	M20x1.5
Dimensions (W x L x H)	119 mm x 85 mm x 89 mm
Type of mounting	On flange according to ISO 5211
Mounting position	optional
Product weight	360 g
Housing colour	Black
Material housing	PA
Material seals	NBR
Material shaft	PA

Feature	Value
Material screws	Stainless steel
Material mounting bracket	PA
Material snap ring	High-alloy stainless steel
Protective cap material	PC
Switching status indication	Optical
Position indicator	Yellow/red
Setting range of angular detection	0 deg ... 90 deg
Storage temperature	-20 °C ... 50 °C
Degree of protection	IP66 IP67
Protection class	II
Shock resistance	Shock test with severity level 1 to FN 942017-5 and EN 60068-2-27
Vibration resistance	Transport application test with severity level 1 to FN 942017-4 and EN 60068-2-6
Corrosion resistance class CRC	3 - high corrosion stress
LABS (PWIS) conformity	VDMA24364 zone III
Pollution degree	3