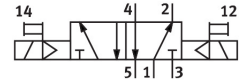
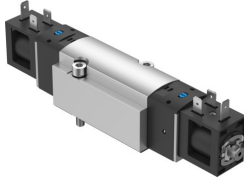



Solenoid valve VSVA-BK-B52-D-D1-1B2

Part number: 8166592

FESTO



 General operating condition

Data sheet

| Feature | Value |
|---|--|
| Valve function | 5/2 bistable |
| Type of actuation | Electric |
| Construction width | 38 mm |
| Valve size | 42 mm |
| Standard nominal flow rate (standardised to DIN 1343) | 1200 l/min |
| pneumatic working port | Sub-base size 1 to ISO 5599-1 |
| Operating voltage | 24V DC |
| Operating pressure | 0.3 MPa ... 0.8 MPa |
| Operating pressure | 3 bar ... 8 bar |
| Design | Piston slide with sealing ring |
| Degree of protection | IP65 With plug socket To IEC 60529 |
| Nominal size | 6.3 mm |
| Grid dimension | 43 mm |
| Exhaust-air function | With flow control option |
| Sealing principle | Soft |
| Mounting position | optional |
| Conforms to standard | ISO 5599-1 |
| Manual override | Detenting Non-detenting |
| ISO code | 155 |
| Type of piloting | Pilot actuated |
| Pilot air supply | Internal |
| Flow direction | Non-reversible |
| Symbol | 00991005 |
| lap | Underlap |
| Signal status display | With accessories |
| b value | 0.26 |
| C value | 5.91 l/sbar |
| Flow rate of valve | 1341 l/min |
| Flow rate of valve on individual sub-base | 1341 l/min |
| Flow rate of pneumatically interlinked valve | 1313 l/min |
| Switching time reversal | 10.5 ms |
| Duty cycle | 100% |
| Max. positive test pulse with 0 signal | 2500 µs |

| Feature | Value |
|---|--|
| Max. negative test pulse with 1 signal | 1100 µs |
| Nominal operating voltage DC | 24 V |
| Characteristic coil data | 24 V DC: 3.3 W |
| Permissible voltage fluctuations | +/- 10 % |
| Operating medium | Compressed air to ISO 8573-1:2010 [7:4:4] |
| Note on operating and pilot medium | Lubricated operation possible (in which case lubricated operation will always be required) |
| Vibration resistance | Transport application test with severity level 2 to FN 942017-4 and EN 60068-2-6 |
| Shock resistance | Shock test with severity level 2 to FN 942017-5 and EN 60068-2-27 |
| Corrosion resistance class CRC | 1 - Low corrosion stress |
| LABS (PWIS) conformity | VDMA24364 zone III |
| Media temperature | -5 °C ... 50 °C |
| Pilot medium | Compressed air to ISO 8573-1:2010 [7:4:4] |
| Ambient temperature | -5 °C ... 50 °C |
| Max. tightening torque for valve mounting | 5 Nm |
| Product weight | 400 g |
| Electrical connection | Type B To industry standard (11 mm) |
| Type of mounting | On sub-base |
| Breather connection | Not ducted |
| Pneumatic connection, port 1 | Sub-base size 1 to ISO 5599-1 |
| Pneumatic connection, port 2 | Sub-base size 1 to ISO 5599-1 |
| Pneumatic connection, port 3 | Sub-base size 1 to ISO 5599-1 |
| Pneumatic connection, port 4 | Sub-base size 1 to ISO 5599-1 |
| Pneumatic connection, port 5 | Sub-base size 1 to ISO 5599-1 |
| Note on materials | RoHS-compliant |
| Material seals | HNBR NBR |
| Material housing | Wrought aluminium alloy |
| Material piston slide | Wrought aluminium alloy |
| Material screws | Galvanised steel |