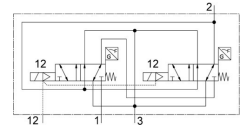
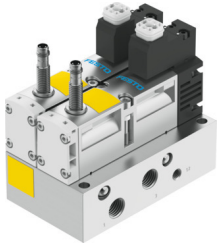


Control block VOFA-L26-T32C-MZ-G14-1C1-APP

Part number: 8162034

FESTO



[PDF General operating condition](#)

Data sheet

| Feature | Value |
|---|--|
| Valve function | 3/2-way, closed, monostable |
| Type of actuation | Electric |
| Construction width | 65 mm |
| Standard nominal flow rate (standardised to DIN 1343) | 1050 l/min |
| pneumatic working port | G1/4 |
| Operating voltage | 24V DC |
| Operating pressure | 0 MPa ... 1 MPa |
| Operating pressure | 0 bar ... 10 bar |
| Operating pressure | 0 psi ... 145 psi |
| Design | Piston gate valve |
| Type of reset | Mechanical spring |
| Degree of protection | IP65 NEMA 4 |
| CE mark (see declaration of conformity) | To EU EMC Directive To EC Machinery Directive |
| UKCA marking (see declaration of conformity) | To UK instructions for EMC To UK regulations for machines |
| Exhaust-air function | With flow control option |
| Sealing principle | Soft |
| Mounting position | optional |
| Conforms to standard | EN 60947-5-2 |
| Manual override | None |
| Type of piloting | Pilot actuated |
| Pilot air supply | External |
| Flow direction | Non-reversible |
| Symbol | 00997399 |
| Measuring principle | Inductive |
| lap | Overlap |
| Reverse polarity protection sensor | For all electrical connections |
| Safety function | Exhaust Protection against manipulation, prevention of unexpected start-up |
| Performance Level (PL) | Exhausting/up to category 4, performance level e Protection against manipulation, prevention of unexpected start-up/up to category 4, Performance Level e |
| Note on forced dynamization | Switching frequency min. 1/week |
| Signal status display | With accessories |
| Switching position sensing | Normal position via sensor |

| Feature | Value |
|--|--|
| Switching status display sensor | LED |
| Pilot pressure | 0.3 MPa ... 1 MPa |
| Pilot pressure | 3 bar ... 10 bar |
| Suitability for vacuum | no |
| Standard nominal flow rate, exhaust 0.6-10 MPa (6-10 bar, 87-10 psi) | 2650 l/min |
| Standard flow rate exhaust 0.6-10 MPa (6-10 bar, 87-10 psi) in case of error | 1050 l/min |
| Switching time off | 54 ms |
| Switching time on | 24 ms |
| Valve - sensor switching time on | 58 ms |
| Valve - sensor switching time off | 11 ms |
| Duty cycle | 100% |
| Max. positive test pulse with 0 signal | 1000 µs |
| Max. negative test pulse with 1 signal | 800 µs |
| Switching output | PNP |
| Characteristic coil data | 24 V DC: 1.8 W |
| Permissible voltage fluctuations | -15%/+10% |
| Operating medium | Compressed air to ISO 8573-1:2010 [7:4:4] |
| Note on operating and pilot medium | Lubricated operation possible (in which case lubricated operation will always be required) |
| Vibration resistance | Transport application test with severity level 2 to FN 942017-4 and EN 60068-2-6 |
| Shock resistance | Shock test with severity level 2 to FN 942017-5 and EN 60068-2-27 |
| Corrosion resistance class CRC | 0 - No corrosion stress |
| LABS (PWIS) conformity | VDMA24364-B1/B2-L |
| Max. magnetic interference field | 60 mT |
| Media temperature | -5 °C ... 50 °C |
| Sound pressure level | 85 dB(A) |
| Protection against direct and indirect contact | PELV Protection class to EN60950/IEC 950 |
| Pilot medium | Compressed air to ISO 8573-1:2010 [7:4:4] |
| Ambient temperature | -5 °C ... 50 °C |
| Nominal altitude of use | 1000 m in accordance with VDE 0580 |
| Product weight | 1134 g |
| Operating voltage range, DC sensor | 10 V ... 30 V |
| Short-circuit strength sensor | Pulsed |
| Idle current sensor | ≤10 mA |
| Max. output current sensor | 200 mA |
| Max. switching frequency sensor | 5000 Hz |
| Residual ripple sensor | ± 10% |
| Voltage drop sensor | ≤2 V |
| Electrical connection | Type C To EN 175301-803 Without protective earth conductor |
| Sensor connection | Plug 3-pin M8x1 |
| Type of mounting | With through-hole |
| Pilot air port 12/14 | M7 |
| Pneumatic connection, port 1 | G1/4 |
| Pneumatic connection, port 2 | G1/4 |
| Pneumatic connection, port 3 | G1/4 |
| Note on materials | RoHS-compliant |
| Material seals | FPM HNBR NBR |

| Feature | Value |
|----------------------------|--------------------------|
| Material housing | Die-cast aluminium PA |
| Material screws | Galvanised steel |
| Switching element function | N/C contact |