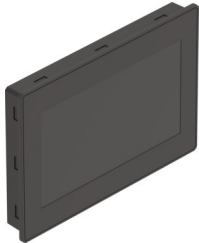


Operator unit CDPX-X-B-W-10

Part number: 8155215

FESTO



 General operating condition

Data sheet

| Feature | Value |
|--|---|
| Width | 282 mm |
| Mounting depth | 29 mm |
| Height | 197 mm |
| Length | 34 mm |
| Max. front panel thickness | 5 mm |
| Real-time clock | Yes |
| Deviation, real-time clock | < 100 ppm at 25 °C |
| Number of colours | 64 k |
| Display | With backlighting |
| Display type | TFT colour |
| Display characteristics | Touchscreen |
| Display size | 10.1" |
| Backup battery | Super capacitor |
| Operational voltage range DC | 10 V ... 32 V |
| Display resolution | 1024x600 pixels |
| Nominal operating voltage DC | 24 V |
| Current consumption at nominal operating voltage | 0.38 A |
| Approval | c UL us listed (OL) |
| CE mark (see declaration of conformity) | To EU EMC Directive In accordance with EU RoHS Directive |
| UKCA marking (see declaration of conformity) | To UK instructions for EMC To UK RoHS instructions |
| LABS (PWIS) conformity | VDMA24364 zone III |
| Storage temperature | -20 °C ... 70 °C |
| Relative air humidity | 5 - 85 % Non-condensing |
| Degree of protection | IP20 IP66 |
| Note on degree of protection | IP20 rear IP66 front |
| Ambient temperature | 0 °C ... 50 °C |
| Note on ambient temperature | for vertical mounting |
| Product weight | 1000 g |
| Additional functions | RS232 communication function |
| Type of mounting | Front panel mounting |
| Note on materials | RoHS-compliant |
| Ethernet interface, connection type | Socket |

| Feature | Value |
|--|-----------------|
| Ethernet interface, connection system | RJ45 |
| Ethernet interface, number of pins/wires | 8 |
| Ethernet interface, transmission rate | 10/100 Mbit/s |
| Ethernet interface, function | Programming |
| USB interface, function | File transfer |
| USB interface, type of connection | Socket |
| USB interface, connection technology | USB 2.0 type A |
| Programming software | Designer Studio |
| CPU data | 512 MB RAM |