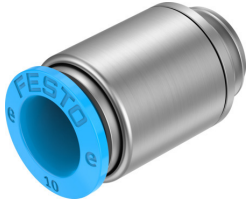


# Push-in fitting NPQE-DK-G14-Q10-F1A-P10

Part number: 8144605

**FESTO**



 General operating condition

## Data sheet

Feature	Value
Size	Standard
Nominal size	7 mm
Type of seal on screwed plug	Sealing ring
Mounting position	optional
Design	Straight design
Size of pack	10
Design	Push-pull principle
Variants	Metals with copper, zinc or nickel by mass as main constituent are excluded from use. Exceptions are nickel in steel, chemically nickel-plated surfaces, printed circuit boards, cables, electrical plug connectors and coils.
Operating pressure complete temperature range	-0.095 MPa ... 0.8 MPa
Operating pressure complete temperature range	-0.95 bar ... 8 bar
Operating pressure complete temperature range	-13.775 psi ... 116 psi
Operating medium	Compressed air to ISO 8573-1:2010 [7:4:4]
Note on operating and pilot medium	Lubricated operation possible
Corrosion resistance class CRC	1 - Low corrosion stress
LABS (PWIS) conformity	VDMA24364 zone III
Suitability for the production of Li-ion batteries	Suitable for battery production according to the Festo internal definition of the degree of severity F1A with restrictions regarding the use of Cu/Zn/Ni
Cleanroom class	Class 4 according to ISO 14644-1
Ambient temperature	-5 °C ... 60 °C
Nominal torque	9 Nm
Tolerance for nominal tightening torque	± 20%
Product weight	17 g
Type of mounting	Internal hexagon, A/F 7 mm
Pneumatic connection, port 1	Male thread G1/4
Pneumatic connection, port 2	For tubing outside diameter of 10 mm
Colour of release ring	Blue
Note on materials	RoHS-compliant
Material housing	High-alloy stainless steel
Material thread seal	Aluminium TPEE
Material release ring	POM
Material tubing seal	NBR
Material tubing clamp component	High-alloy stainless steel