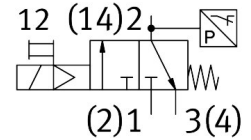
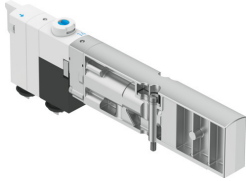


# Solenoid valve VMPA1-M1H-ES-PI

Part number: 8126791

**FESTO**



[PDF](#) General operating condition

## Data sheet

Feature	Value
Valve function	3/2-way, closed, monostable
Type of actuation	Electric
Valve size	10 mm
pneumatic working port	M7
Operating voltage	24V DC
Operating pressure	0.3 MPa ... 0.8 MPa
Operating pressure	3 bar ... 8 bar
Design	Poppet valve with spring return
Type of reset	Mechanical spring
Degree of protection	IP65 In assembled state To IEC 60529
Sealing principle	Soft
Mounting position	optional
Manual override	Detenting Non-detenting
Type of piloting	Pilot actuated
Pilot air supply	External
Flow direction	Non-reversible
Symbol	00997594
lap	Underlap
Signal status display	yes
Pilot pressure	0.3 MPa ... 0.8 MPa
Pilot pressure	3 bar ... 8 bar
Suitability for vacuum	no
Permissible voltage fluctuations	+/- 25%
Operating medium	Compressed air to ISO 8573-1:2010 [7:4:4]
Note on operating and pilot medium	Lubricated operation not possible
Vibration resistance	Transport application test with severity level 2 to FN 942017-4 and EN 60068-2-6
Shock resistance	Shock test with severity level 2 to FN 942017-5 and EN 60068-2-27
Corrosion resistance class CRC	1 - Low corrosion stress
LABS (PWIS) conformity	VDMA24364 zone III
Storage temperature	-20 °C ... 60 °C
Media temperature	-5 °C ... 50 °C
Relative air humidity	Max. 90% at 40°C

Feature	Value
Ambient temperature	-5 °C ... 50 °C
Max. tightening torque for valve mounting	0.65 Nm
Product weight	32 g
Switch-off point min.	0.05 bar
Switch-on point	0.2 bar
Switch-on point max.	0.3 bar
Type of mounting	With through-hole
Pilot air port 12/14	M7
Pilot exhaust port 82/84	M7
Pneumatic connection, port 1	M7
Pneumatic connection, port 2	Internal
Pneumatic connection, port 3	M7
Note on materials	RoHS-compliant
Material seals	HNBR NBR
Material housing	PPA reinforced
Material screws	Coated steel