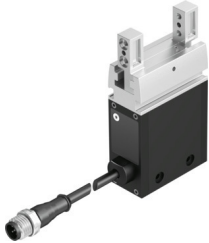



# Parallel gripper EHPS-16-A-LK

Part number: 8103809

FESTO



 [General operating condition](#)

## Data sheet

Feature	Value
Size	16
Stroke per gripper jaws	10 mm
Max. replacement accuracy	≤0.2 mm
Max. angular gripper jaw backlash ax, ay	0.4 deg
Max. gripper jaw backlash Sz	0.05 mm
Rotationally symmetrical	≤0.2 mm
Repetition accuracy, gripper	≤0.03 mm
Number of gripper jaws	2
Drive system	Electrical
Mounting position	optional
Gripper function	Parallel
Design	Worm gear unit T-shape Rack and pinion Electric gripper
Conforms to standard	IEC 61010-1
Guide	Plain-bearing guide
Position detection	With Hall sensor With integrated displacement encoder Via IO-Link interface
Symbol	00992258
Type of motor	DC servo motor
Ready status indication	LED
Max. cycle frequency	1.1 Hz
Max. mass per external gripper finger	100 g
Max. current consumption	1000 mA
Nominal operating voltage DC	24 V
Permissible voltage fluctuations	+/- 10 %
Approval	RCM trademark
KC mark	KC-EMV
CE mark (see declaration of conformity)	To EU EMC Directive In accordance with EU RoHS Directive
UKCA marking (see declaration of conformity)	To UK instructions for EMC To UK RoHS instructions
Explosion protection certification outside the EU	EPL Db (GB) EPL Gb (GB)
Explosion protection	Zone 1 (UKEX) Zone 21 (UKEX)

Feature	Value
Corrosion resistance class CRC	1 - Low corrosion stress
LABS (PWIS) conformity	VDMA24364-B2-L
Suitability for the production of Li-ion batteries	Metals with more than 5% by mass of copper are excluded from use. Exceptions are printed circuit boards, cables, electrical plug connectors and coils
Sound pressure level	≤70 dB(A)
Degree of protection	IP40
Ambient temperature	5 °C ... 60 °C
Total gripping force	154 N
Mass moment of inertia	0.78 kgcm <sup>2</sup>
Max. force on gripper jaw Fz static	200 N
Max. torque at gripper Mx static	7 Nm
Max. torque at gripper My static	4.4 Nm
Max. torque at gripper Mz static	7 Nm
Lubrication interval for guide components	2 MioCyc
Product weight	296 g
Protocol	IO-Link®
IO-Link, Protocol version	Device V 1.1
IO-Link, communication mode	COM3 (230.4 kBaud)
IO-Link, SIO-Mode support	No
IO-Link, Port class	Device B
IO-Link, Number of ports	Device 1
IO-Link, Process data length OUT	8 bytes
IO-Link, Process data content OUT	16 bit (ControlWord) 16 bit (GrippingPosition) 8-bit (GrippingForce) 8 bit (GrippingMode) 8 bit (GrippingTolerance) 8 bit (WorkpieceNo)
IO-Link, Process data length IN	6 bytes
IO-Link, Process data content IN	16-bit (ActualPosition) 16 bit (ErrorNumber) 16 bit (StatusWord)
IO-Link, Min. cycle time	5 ms
IO-Link, Data storage required	<500 Byte
IO-Link, Device ID	0x000031
Electrical connection	5-pin Cable with plug M12x1
Type of mounting	Either: Via female thread and centring sleeve Via through-hole and centring sleeve
Note on materials	RoHS-compliant
Material housing	Anodised wrought aluminium alloy
Material gripper jaws	High-alloy stainless steel