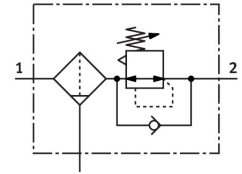


Filter regulator MS6-LFR-1/2-D6-C-P-M-A8-B

Part number: 8098301

FESTO



[PDF General operating condition](#)

Data sheet

Feature	Value
Size	6
Series	MS
Actuator lock	Rotary knob with detent
Mounting position	Vertical +/-5°
Grade of filtration	5 µm
Condensate drain	Manually rotating
Design	Filter regulator without pressure gauge Directly actuated piston regulator
Max. condensate volume	27.3 ml
Controller function	Output pressure constant With secondary venting With return flow function
Degree of condensate separation	>75 %
Symbol	00991590
Pressure gauge (ANALOG) or Pressure display (DIGITAL)	Prepared for G1/8
Operating pressure	0.1 MPa ... 1 MPa
Operating pressure	1 bar ... 10 bar
Pressure regulation range	0.3 bar ... 7 bar
Max. pressure hysteresis	0.035 MPa
Max. pressure hysteresis	0.35 bar
Max. pressure hysteresis	5.075 psi
Standard nominal flow rate (standardised to DIN 1343)	4750 l/min
Operating medium	Compressed air to ISO 8573-1:2010 [7:4:4] Inert gases
Note on operating and pilot medium	Compatibility with ester oil not guaranteed
Corrosion resistance class CRC	1 - Low corrosion stress
LABS (PWIS) conformity	VDMA24364-B1/B2-L
Cleanroom class	Class 7 according to ISO 14644-1
Storage temperature	-5 °C ... 50 °C
Air purity class at output	Compressed air to ISO 8573-1:2010 [6:4:4]
Media temperature	-5 °C ... 50 °C
Ambient temperature	-5 °C ... 50 °C
Pore size	5 µm
Product weight	578 g

Feature	Value
Type of mounting	Either: Front panel mounting In-line installation With accessories
Pneumatic connection, port 1	G1/2
Pneumatic connection, port 2	G1/2
Note on materials	RoHS-compliant
Material seals	NBR
Material rotary knob	POM
Material spring	High-alloy steel Galvanised steel
Material filter	PE
Material housing	PA-reinforced
Material bowl	PC
Material valve stem	POM