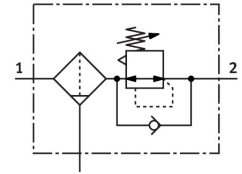


# Filter regulator MS2-LFR-QS6-D6-C-P-M-A8-B

Part number: 8086646

FESTO



[PDF](#) General operating condition

## Data sheet

Feature	Value
Size	2
Series	MS
Actuator lock	Rotary knob with detent
Mounting position	Vertical +/-5°
Grade of filtration	5 µm
Condensate drain	Manually rotating
Design	Filter regulator without pressure gauge
Max. condensate volume	3 ml
Controller function	Output pressure constant With secondary venting With return flow function
Symbol	00991590
Pressure gauge (ANALOG) or Pressure display (DIGITAL)	Prepared for G1/8
Operating pressure	0.1 MPa ... 0.8 MPa
Operating pressure	1 bar ... 8 bar
Pressure regulation range	0.5 bar ... 7 bar
Max. pressure hysteresis	0.025 MPa
Max. pressure hysteresis	0.25 bar
Max. pressure hysteresis	3.625 psi
Standard nominal flow rate (standardised to DIN 1343)	310 l/min
Operating medium	Compressed air to ISO 8573-1:2010 [7:4:4] Inert gases
Corrosion resistance class CRC	1 - Low corrosion stress
LABS (PWIS) conformity	VDMA24364-B1/B2-L
Cleanroom class	Class 7 according to ISO 14644-1
Storage temperature	-5 °C ... 50 °C
Air purity class at output	Compressed air to ISO 8573-1:2010 [6:4:4]
Media temperature	-5 °C ... 50 °C
Ambient temperature	-5 °C ... 50 °C
Product weight	35.7 g
Type of mounting	Either: Front panel mounting In-line installation With accessories
Pneumatic connection, port 1	QS-6
Pneumatic connection, port 2	QS-6

<b>Feature</b>	<b>Value</b>
Note on materials	RoHS-compliant
Material seals	NBR
Material rotary knob	POM
Material spring	High-alloy steel
Material filter	PE
Material housing	PA-reinforced
Material membrane	NBR
Material bowl	PC
Material separating plate	POM
Material valve stem	Wrought aluminium alloy NBR