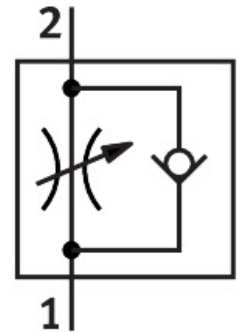



One-way flow control valve VFOE-LE-T-G38-Q10

Part number: 8068732

FESTO



 [General operating condition](#)

Data sheet

Feature	Value
Valve function	Exhaust air one-way flow control function
Pneumatic connection, port 1	QS-10
Pneumatic connection, port 2	G3/8
Type of actuation	Manual
Adjustment component	Rotary knob with detent
Type of mounting	Screw-in
Standard nominal flow rate in flow control direction	750 l/min
Standard nominal flow rate in blocked direction	700 l/min ... 1000 l/min
Ambient temperature	-10 °C ... 60 °C
Material housing	PBT
Explosion protection	The information in the certificate must be observed! Zone 1 (ATEX) Zone 2 (ATEX) Zone 21 (ATEX) Zone 22 (ATEX)
Mounting position	optional
Symbol	00991452
Width across flats	21 mm
Rotatability	360°/no continuous swivelling permissible
Operating pressure complete temperature range	0.02 MPa ... 1 MPa
Operating pressure complete temperature range	0.2 bar ... 10 bar
Operating pressure complete temperature range	2.9 psi ... 145 psi
Standard flow rate in flow control direction 0.6-10 MPa (6-10 bar, 87-10 psi)	1280 l/min
Standard flow rate in non-return direction 0.6-10 MPa (6-10 bar, 87-10 psi)	1400 l/min ... 1600 l/min
Operating medium	Compressed air to ISO 8573-1:2010 [7:4:4]
Note on operating and pilot medium	Lubricated operation possible (in which case lubricated operation will always be required)
LABS (PWIS) conformity	VDMA24364 zone III
Cleanroom class	Class 4 according to ISO 14644-1

Feature	Value
Media temperature	-10 °C ... 60 °C
Max. tightening torque	15.6 Nm
Nominal torque	13 Nm
Tolerance for nominal tightening torque	± 20%
Product weight	29.5 g
Note on materials	RoHS-compliant
Material cover	PBT
Material dynamic seals	HNBR
Material threaded bolt	Galvanised steel
Material release ring	PBT
Material static seals	NBR