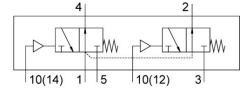


Pneumatic valve VSPA-B-T32U-M-D2

Part number: 8033655

FESTO



General operating condition

Data sheet

| Feature | Value |
|--|--|
| Valve function | 2x3/2-way, open, monostable |
| Type of actuation | Pneumatic |
| Construction width | 52 mm |
| Nominal flow rate standardised according to ISO 8778 | 2000 l/min |
| pneumatic working port | Sub-base size 2 to ISO 5599-1 |
| Operating pressure | -0.09 MPa ... 1 MPa |
| Operating pressure | -0.9 bar ... 10 bar |
| Design | Piston gate valve |
| Type of reset | Mechanical spring |
| Nominal size | 11.5 mm |
| Exhaust-air function | Via individual sub-base |
| Sealing principle | Soft |
| Mounting position | optional |
| Type of piloting | Direct |
| Pilot air supply | External |
| Flow direction | Non-reversible |
| Symbol | 00995851 |
| lap | Overlap |
| Pilot pressure | 0.3 MPa ... 1.6 MPa |
| Pilot pressure | 3 bar ... 16 bar |
| Suitability for vacuum | yes |
| b value | 0.69 |
| C value | 3167 l/sbar |
| Flow rate of valve | 1800 l/min |
| Flow rate of valve on individual sub-base | 1800 l/min |
| Operating medium | Compressed air to ISO 8573-1:2010 [7:4:4] |
| Note on operating and pilot medium | Lubricated operation possible (in which case lubricated operation will always be required) |
| Vibration resistance | Transport application test with severity level 2 to FN 942017-4 and EN 60068-2-6 |
| Shock resistance | Shock test with severity level 2 to FN 942017-5 and EN 60068-2-27 |
| Corrosion resistance class CRC | 0 - No corrosion stress |
| LABS (PWIS) conformity | VDMA24364-B1/B2-L |
| Media temperature | -10 °C ... 60 °C |
| Sound pressure level | 85 dB(A) |
| Pilot medium | Compressed air to ISO 8573-1:2010 [7:4:4] |

| Feature | Value |
|---|-------------------------------|
| Max. tightening torque for valve mounting | 2 Nm |
| Product weight | 680 g |
| Type of mounting | On sub-base |
| Pilot air port 12 | Sub-base size 2 to ISO 5599-1 |
| Pilot air port 14 | Sub-base size 2 to ISO 5599-1 |
| Pneumatic connection, port 1 | Sub-base size 2 to ISO 5599-1 |
| Pneumatic connection, port 2 | Sub-base size 2 to ISO 5599-1 |
| Pneumatic connection, port 3 | Sub-base size 2 to ISO 5599-1 |
| Pneumatic connection, port 4 | Sub-base size 2 to ISO 5599-1 |
| Pneumatic connection, port 5 | Sub-base size 2 to ISO 5599-1 |
| Note on materials | RoHS-compliant |
| Material seals | NBR |
| Material housing | Die-cast aluminium |
| Material screws | Steel Galvanised |