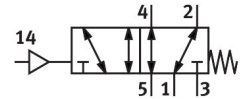



Pneumatic valve VSPA-B-M52-M-D2

Part number: 8033650

FESTO



 [General operating condition](#)

Data sheet

Feature	Value
Valve function	5/2-way, monostable
Type of actuation	Pneumatic
Construction width	52 mm
Nominal flow rate standardised according to ISO 8778	4100 l/min
pneumatic working port	Sub-base size 2 to ISO 5599-1
Operating pressure	-0.09 MPa ... 1.6 MPa
Operating pressure	-0.9 bar ... 16 bar
Design	Piston gate valve
Type of reset	Mechanical spring
Nominal size	11.5 mm
Exhaust-air function	Via individual sub-base
Sealing principle	Soft
Mounting position	optional
Type of piloting	Direct
Pilot air supply	External
Flow direction	Reversible
Symbol	00991029
lap	Overlap
Pilot pressure	0.3 MPa ... 1.6 MPa
Pilot pressure	3 bar ... 16 bar
Suitability for vacuum	yes
b value	0.3
C value	8167 l/sbar
Flow rate of valve	3800 l/min
Flow rate of valve on individual sub-base	3200 l/min
Operating medium	Compressed air to ISO 8573-1:2010 [7:4:4]
Note on operating and pilot medium	Lubricated operation possible (in which case lubricated operation will always be required)
Vibration resistance	Transport application test with severity level 2 to FN 942017-4 and EN 60068-2-6
Shock resistance	Shock test with severity level 2 to FN 942017-5 and EN 60068-2-27
Corrosion resistance class CRC	0 - No corrosion stress
LABS (PWIS) conformity	VDMA24364-B1/B2-L
Media temperature	-10 °C ... 60 °C
Sound pressure level	85 dB(A)
Pilot medium	Compressed air to ISO 8573-1:2010 [7:4:4]

Feature	Value
Max. tightening torque for valve mounting	2 Nm
Product weight	600 g
Type of mounting	On sub-base
Pilot air port 12	Sub-base size 2 to ISO 5599-1
Pilot air port 14	Sub-base size 2 to ISO 5599-1
Pneumatic connection, port 1	Sub-base size 2 to ISO 5599-1
Pneumatic connection, port 2	Sub-base size 2 to ISO 5599-1
Pneumatic connection, port 3	Sub-base size 2 to ISO 5599-1
Pneumatic connection, port 4	Sub-base size 2 to ISO 5599-1
Pneumatic connection, port 5	Sub-base size 2 to ISO 5599-1
Note on materials	RoHS-compliant
Material seals	NBR
Material housing	Die-cast aluminium
Material screws	Steel Galvanised