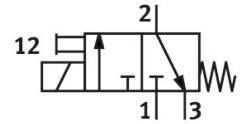
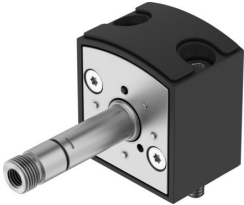



# Solenoid valve VSCS-B-M32C-M-WB-F8

Part number: 8028542

FESTO



 General operating condition

## Data sheet

Feature	Value
Valve function	3/2-way, closed, monostable
Type of actuation	Electric
Construction width	30 mm
Standard nominal flow rate (standardised to DIN 1343)	34 l/min
pneumatic working port	Sub-base size 30 mm to ISO 15218
Operating pressure	0.2 MPa ... 1 MPa
Operating pressure	2 bar ... 10 bar
Operating pressure	29 psi ... 145 psi
Design	Sub-base valve
Type of reset	Mechanical spring
Degree of protection	IP65
Sealing principle	Soft
Mounting position	optional
Conforms to standard	ISO 15218
Manual override	Covered
Type of piloting	Direct
Flow direction	Non-reversible
Symbol	00991308
lap	Underlap
Note on forced dynamization	Switching frequency min. 1/week
Max. switching frequency	5 Hz
Switching time off	8 ms
Switching time on	8 ms
Duty cycle	100%
Max. positive test pulse with 0 signal	3000 µs
Max. negative test pulse with 1 signal	3400 µs
Operating medium	Compressed air to ISO 8573-1:2010 [7:4:4]
Note on operating and pilot medium	Lubricated operation possible (in which case lubricated operation will always be required)
Vibration resistance	Transport application test with severity level 2 to FN 942017-4 and EN 60068-2-6
Shock resistance	Shock test with severity level 2 to FN 942017-5 and EN 60068-2-27
Corrosion resistance class CRC	1 - Low corrosion stress
LABS (PWIS) conformity	VDMA24364-B1/B2-L
Media temperature	-10 °C ... 50 °C
Ambient temperature	-10 °C ... 50 °C

Feature	Value
Type of mounting	CNOMO
Note on materials	RoHS-compliant
Material seals	NBR