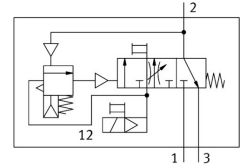


# Soft start/quick exhaust valve MS6-SV-1/2-C-10V24-S

Part number: 8001469

**FESTO**



 General operating condition

## Data sheet

Feature	Value
Series	MS
Size	6
Grid dimension	62 mm
Safety function	Exhaust Prevention of unexpected start-up (pressurisation)
Performance Level (PL)	Exhausting/category 1, performance level c Prevention of unexpected start-up (pressurisation)/category 1, performance level c
Note on forced dynamization	Switching frequency min. 1/month
Design	Piston gate valve
lap	Overlap
Type of actuation	Electric
Pilot air supply	Internal
Sealing principle	Soft
Exhaust-air function	Without flow control option
Manual override	On pilot solenoid valves: non-detenting; on soft-start/quick exhaust valve: detenting, self-resetting
Type of reset	Mechanical spring
Type of piloting	Pilot actuated
Symbol	00995813
Valve function	3/2-way, closed, monostable Soft-start function
Operating pressure	0.3 MPa ... 1 MPa
Operating pressure	3 bar ... 10 bar
C value	23.2 l/sbar
b value	0.4
Standard nominal flow rate (standardised to DIN 1343)	5700 l/min
Standard nominal flow rate, exhaust 0.6-10 MPa (6-10 bar, 87-145 psi)	7600 l/min
Switching time off	65 ms
Switching time on	370 ms
Duty cycle	100%
Characteristic coil data	24 V DC: 1.8 W
Permissible voltage fluctuations	+/- 10 %
Operating medium	Compressed air to ISO 8573-1:2010 [7:4:4]
Note on operating and pilot medium	Lubricated operation possible (in which case lubricated operation will always be required)

Feature	Value
Corrosion resistance class CRC	2 - Moderate corrosion stress
Note on materials	RoHS-compliant
LABS (PWIS) conformity	VDMA24364-B1/B2-L
Degree of protection	IP65 With plug socket
Media temperature	0 °C ... 60 °C
Ambient temperature	0 °C ... 60 °C
Storage temperature	-10 °C ... 60 °C
Shock resistance	Shock test with severity level 2 to FN 942017-5 and EN 60068-2-27
Vibration resistance	Transport application test with severity level 2 to FN 942017-4 and EN 60068-2-6
CE mark (see declaration of conformity)	To EU EMC Directive To EC Machinery Directive In accordance with EU RoHS Directive
UKCA marking (see declaration of conformity)	To UK instructions for EMC To UK regulations for machines To UK RoHS instructions
Suitable for use with food	See supplementary material information
Type of mounting	Either: In-line installation With accessories
Mounting position	optional
Product weight	1006 g
Pneumatic connection, port 1	G1/2
Pneumatic connection, port 2	G1/2
Pneumatic connection, port 3	G3/4
Electrical connection	2-pin Type C Plugs To EN 175301-803
Material housing	Die-cast aluminium
Material seals	NBR
Material piston rod	High-alloy stainless steel