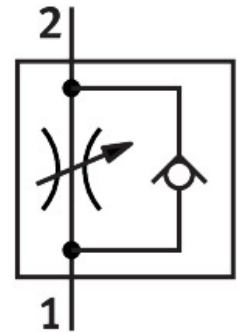



One-way flow control valve GRA-1/4-B

Part number: 6509

FESTO



 [General operating condition](#)

Data sheet

| Feature | Value |
|--|--|
| Valve function | One-way flow control function |
| Pneumatic connection, port 1 | Female thread G1/4 |
| Pneumatic connection, port 2 | Female thread G1/4 |
| Adjustment component | Knurled screw |
| Type of mounting | Either: Front panel mounting With through-hole |
| Standard nominal flow rate in flow control direction | 420 l/min |
| Standard nominal flow rate in blocked direction | 780 l/min |
| Operating pressure | 0.01 MPa ... 1 MPa |
| Operating pressure | 0.1 bar ... 10 bar |
| Operating pressure | 1.45 psi ... 145 psi |
| Ambient temperature | -20 °C ... 75 °C |
| Material housing | Die-cast zinc |
| Explosion protection | The information in the certificate must be observed! Zone 1 (ATEX) Zone 2 (ATEX) Zone 21 (ATEX) Zone 22 (ATEX) |
| Mounting position | optional |
| Symbol | 00991453 |
| Operating medium | Compressed air to ISO 8573-1:2010 [7:4:4] |
| Note on operating and pilot medium | Lubricated operation possible (in which case lubricated operation will always be required) |
| LABS (PWIS) conformity | VDMA24364-B1/B2-L |
| Storage temperature | -20 °C ... 75 °C |
| Media temperature | -20 °C ... 75 °C |
| Product weight | 180 g |
| Note on materials | RoHS-compliant |
| Material seals | NBR |
| Material adjusting screw | Brass |