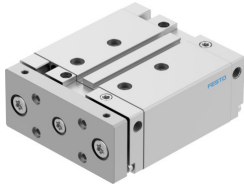


Guided drive DFM-40-50-B-PPV-A-GF

Part number: 595646

FESTO



 [General operating condition](#)

Data sheet

Feature	Value
Stroke	50 mm
Piston diameter	40 mm
Operating mode, drive unit	Yoke
Cushioning	Pneumatic cushioning, adjustable at both ends
Mounting position	optional
Guide	Plain-bearing guide
Design	Guidance
Position detection	Via proximity switch
Operating pressure	0.15 MPa ... 1 MPa
Mode of operation	Double-acting
Operating medium	Compressed air to ISO 8573-1:2010 [7:4:4]
Note on operating and pilot medium	Lubricated operation possible (in which case lubricated operation will always be required)
Corrosion resistance class CRC	2 - Moderate corrosion stress
LABS (PWIS) conformity	VDMA24364-B1/B2-L
Cleanroom class	Class 6 according to ISO 14644-1
Ambient temperature	-20 °C ... 80 °C
Impact energy in end positions	0.7 J
Theoretical force at 0.6 MPa (6 bar, 87 psi), return stroke	686 N
Theoretical force at 0.6 MPa (6 bar, 87 psi), advance stroke	754 N
alternative connections	See product drawing
Pneumatic connection	G1/8
Material cover	Wrought aluminium alloy
Material seals	NBR
Material housing	Wrought aluminium alloy
Material piston rod	High-alloy stainless steel