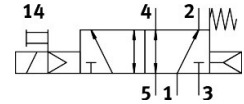
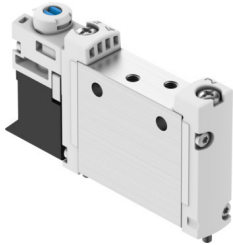



# Solenoid valve VUVG-L10A-M52-RT-M3-1P3

Part number: 566437

**FESTO**



 General operating condition

## Data sheet

Feature	Value
Valve function	5/2-way, monostable
Type of actuation	Electric
Valve size	10 mm
Standard nominal flow rate (standardised to DIN 1343)	100 l/min
pneumatic working port	M3
Operating voltage	24V DC
Operating pressure	0.25 MPa ... 0.8 MPa
Operating pressure	2.5 bar ... 8 bar
Design	Piston gate valve
Type of reset	Mechanical spring Pneumatic spring
Approval	RCM trademark c UL us - Recognized (OL)
Degree of protection	IP40 IP65 With plug socket
Nominal size	2 mm
Exhaust-air function	With flow control option
Sealing principle	Soft
Mounting position	optional
Manual override	Detenting Non-detenting Covered
Type of piloting	Pilot actuated
Pilot air supply	Internal
Symbol	00992233
lap	Overlap
Pilot pressure	0.25 MPa ... 0.8 MPa
Pilot pressure	2.5 bar ... 8 bar
Suitability for vacuum	no
Switching time off	15 ms
Switching time on	8 ms
Duty cycle	100%
Max. positive test pulse with 0 signal	700 µs
Max. negative test pulse with 1 signal	900 µs
Characteristic coil data	24 V DC: 1.0 W 24 V DC: low-current phase 0.3 W, high-current phase 1.0 W
Permissible voltage fluctuations	+/- 10 %

Feature	Value
Operating medium	Compressed air to ISO 8573-1:2010 [7:4:4]
Note on operating and pilot medium	Lubricated operation possible (in which case lubricated operation will always be required)
Vibration resistance	Transport application test with severity level 2 to FN 942017-4 and EN 60068-2-6
Restrictions for environmental and media temperature	-5 ... 50° C Without holding current reduction
Shock resistance	Shock test with severity level 2 to FN 942017-5 and EN 60068-2-27
Corrosion resistance class CRC	2 - Moderate corrosion stress
LABS (PWIS) conformity	VDMA24364-B1/B2-L
Cleanroom class	Class 5 according to ISO 14644-1
Media temperature	-5 °C ... 60 °C
Ambient temperature	-5 °C ... 60 °C
Product weight	38 g
Electrical connection	Via electrical sub-base
Type of mounting	Either: On manifold rail With through-hole
Pneumatic connection, port 1	M3
Pneumatic connection, port 2	M3
Pneumatic connection, port 3	M3
Pneumatic connection, port 4	M3
Pneumatic connection, port 5	M3
Note on materials	RoHS-compliant
Material seals	HNBR NBR
Material housing	Wrought aluminium alloy