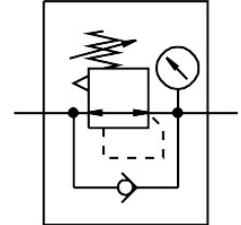



# Pressure regulator MS9-LR-G-D6-AG-BAR-AS

Part number: 564136

**FESTO**



 [General operating condition](#)

## Data sheet

Feature	Value
Size	9
Series	MS
Actuator lock	can be closed with accessories
Mounting position	optional
Design	Piloted diaphragm regulator
Controller function	Output pressure constant Via primary pressure compensation With secondary venting With return flow function
Symbol	00991536
Pressure gauge (ANALOG) or Pressure display (DIGITAL)	With pressure gauge
Operating pressure	1 bar ... 20 bar
Pressure regulation range	0.5 bar ... 7 bar
Max. pressure hysteresis	0.4 bar
Operating medium	Compressed air to ISO 8573-1:2010 [7:4:4] Inert gases
Note on operating and pilot medium	Lubricated operation possible (in which case lubricated operation will always be required)
Corrosion resistance class CRC	2 - Moderate corrosion stress
LABS (PWIS) conformity	VDMA24364-B1/B2-L
Storage temperature	-10 °C ... 60 °C
Media temperature	-10 °C ... 60 °C
Ambient temperature	-10 °C ... 60 °C
Product weight	1400 g
Type of mounting	Either: Front panel mounting In-line installation With accessories
Material covering	PA-reinforced
Note on materials	RoHS-compliant
Material sub-base	Die-cast aluminium
Material mounting bracket	Die-cast aluminium
Material housing	Die-cast aluminium
Material module connector	Die-cast aluminium
Material membrane	NBR

Feature	Value
Material valve stem	Wrought aluminium alloy NBR POM