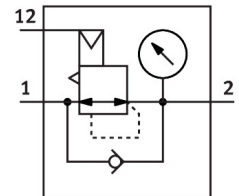


# Pressure regulator MS9-LR

Part number: 562530

FESTO



General operating condition

## Data sheet

Overall data sheet – Individual values depend upon your configuration.

Feature	Value
Size	9
Series	MS
Actuator lock	Rotary knob with detent Rotary knob with integrated lock can be closed with accessories
Mounting position	optional Preferably vertical
Design	Piloted diaphragm regulator Piloted precision pressure regulator
Controller function	Output pressure constant Via primary pressure compensation With secondary venting With return flow function Without secondary venting
Symbol	00991533 00991536 00991900 00995303
Pressure gauge (ANALOG) or Pressure display (DIGITAL)	Prepared for G1/4 Prepared for G1/8 Red/green scale Via pressure sensor With pressure gauge Via operational status indicator
Operating pressure	1 bar ... 20 bar
Pressure regulation range	0.1 bar ... 16 bar
Max. pressure hysteresis	0.05 bar ... 0.4 bar
Max. standard flow rate	32000 l/min
Standard nominal flow rate (standardised to DIN 1343)	11000 l/min ... 30000 l/min
Operational voltage range DC	21.6 V ... 26.4 V
Max. electrical power consumption	4.2 W
Max. current consumption	0.16 A
Nominal operating voltage DC	24 V
Residual ripple	10 %
Signal range analogue input	0 - 10 V 4 - 20 mA
Approval	c UL us - Recognized (OL)

Feature	Value
CE mark (see declaration of conformity)	To EU Explosion Protection Directive (ATEX)
UKCA marking (see declaration of conformity)	To UK EX instructions
Explosion protection certification outside the EU	EPL Db (GB) EPL Gb (GB)
Explosion protection	Zone 1 (ATEX) Zone 1 (UKEX) Zone 2 (ATEX) Zone 21 (ATEX) Zone 21 (UKEX) Zone 22 (ATEX)
ATEX category gas	II 2G
ATEX category dust	II 2D
Explosion ignition protection type for gas	Ex h IIC T6 Gb X
Explosion ignition protection type for dust	Ex h IIIC T60°C Db X
Explosion ambient temperature	-10 °C ≤ Ta ≤ +60 °C
Operating medium	Compressed air to ISO 8573-1:2010 [7:4:4] Inert gases
Note on operating and pilot medium	Lubricated operation possible (in which case lubricated operation will always be required) Lubricated operation not possible
Corrosion resistance class CRC	2 - Moderate corrosion stress
LABS (PWIS) conformity	VDMA24364-B1/B2-L
Storage temperature	-10 °C ... 60 °C
Media temperature	-10 °C ... 60 °C
Ambient temperature	-10 °C ... 60 °C
Product weight	1400 g
Type of mounting	Either: Front panel mounting In-line installation With accessories
Material covering	PA-reinforced
Note on materials	RoHS-compliant
Material sub-base	Die-cast aluminium
Material mounting bracket	Die-cast aluminium
Material housing	Die-cast aluminium
Material module connector	Die-cast aluminium
Material membrane	NBR
Material valve stem	Wrought aluminium alloy NBR POM