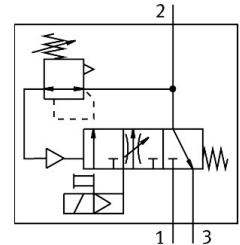



Soft start/quick exhaust valve MS9-SV

Part number: 562176

FESTO



 General operating condition

Data sheet

Overall data sheet – Individual values depend upon your configuration.

Feature	Value
Series	MS
Size	9
Grid dimension	90 mm
Safety function	Exhaust
Performance Level (PL)	Exhausting/up to category 1, performance level c
Design	Piston gate valve
Type of actuation	Electric
Sealing principle	Soft
Exhaust-air function	Without flow control option
Manual override	None On pilot solenoid valves: non-detenting; on soft-start/quick exhaust valve: detenting, self-resetting
Type of reset	Mechanical spring
Type of piloting	Pilot actuated
Symbol	00995240
Valve function	3/2-way, closed, monostable Soft-start function
Operating pressure	0.35 MPa ... 1.6 MPa
Operating pressure	3.5 bar ... 16 bar
Pressure gauge (ANALOG) or Pressure display (DIGITAL)	Prepared for G1/4 Prepared for G1/8 Red/green scale Via pressure sensor With pressure gauge Via operational status indicator
Standard nominal flow rate (standardised to DIN 1343)	8300 l/min ... 16550 l/min
Duty cycle	100%
Characteristic coil data	110 V AC: 50/60 Hz, pick-up power 14.5 VA, holding power 10.5 VA 230 V AC: 50/60 Hz, pick-up power 14.5 VA, holding power 10.5 VA 24 V DC: 2.7 W 24 V DC: 8.4 W
Nominal operating voltage DC	230 V
Permissible voltage fluctuations	+/- 10 %
Operating medium	Compressed air to ISO 8573-1:2010 [7:4:4]

Feature	Value
Note on operating and pilot medium	Lubricated operation possible (in which case lubricated operation will always be required)
Corrosion resistance class CRC	2 - Moderate corrosion stress
Note on materials	RoHS-compliant
LABS (PWIS) conformity	VDMA24364-B1/B2-L
Degree of protection	IP65
Media temperature	0 °C ... 60 °C
Ambient temperature	0 °C ... 60 °C
Storage temperature	0 °C ... 60 °C
Shock resistance	Shock test with severity level 1 to FN 942017-5 and EN 60068-2-27
Vibration resistance	Transport application test with severity level 1 to FN 942017-4 and EN 60068-2-6
Approval	c UL us - Recognized (OL)
CE mark (see declaration of conformity)	To EU EMC Directive To EC Machinery Directive In accordance with EU RoHS Directive
UKCA marking (see declaration of conformity)	To UK instructions for EMC To UK regulations for machines To UK RoHS instructions
Type of mounting	Either: In-line installation With accessories
Mounting position	optional
Pressure gauge connection	G1/8 G1/4
Electrical connection	Type A Plugs To EN 175301-803 Square design
Material housing	Die-cast aluminium
Material seals	NBR
Material piston slide	Brass
Material cover	Wrought aluminium alloy
Material underneath cover	PA