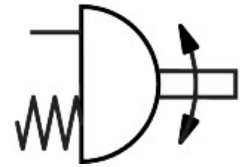


# Quarter turn actuator DAPS-0060-090-RS3-F0507-CR

Part number: 552885

**FESTO**



 [General operating condition](#)

## Data sheet

Feature	Value
Size of valve actuator	0060
Flange hole pattern	F05 F07
Swivel angle	90 deg
Shaft connection depth	16.3 mm
Fitting connection conforms to standard	ISO 5211
Cushioning	No cushioning
Mounting position	optional
Mode of operation	Single-acting
Design	Scotch yoke system
Position detection	Without
Closing direction	Closes to the right
Symbol	00991266
Valve connection conforms to standard	VDI/VDE 3845 (NAMUR)
Safety Integrity Level (SIL)	Up to SIL 2 High Demand mode To SIL 2 Low Demand mode
Supply pressure for spring strength	0.42 MPa
Supply pressure for spring strength	4.2 bar
Operating pressure	0.42 MPa ... 0.84 MPa
Operating pressure	4.2 bar ... 8.4 bar
Nominal operating pressure	0.56 MPa
Nominal operating pressure	5.6 bar
CE mark (see declaration of conformity)	To EU Explosion Protection Directive (ATEX)
UKCA marking (see declaration of conformity)	To UK EX instructions
Explosion protection	Zone 1 (ATEX) Zone 2 (ATEX) Zone 21 (ATEX) Zone 22 (ATEX)
Certificate issuing authority	German Technical Control Board North (TÜV Nord) 212170801
ATEX category gas	II 2G
ATEX category dust	II 2D
Explosion ignition protection type for gas	Ex h IIC T6...T3 Gb X
Explosion ignition protection type for dust	Ex h IIIC T85°C...T200°C Db X
Explosion ambient temperature	-20°C ≤ Ta ≤ +60°C
Operating medium	Compressed air to ISO 8573-1:2010 [7:4:4]

Feature	Value
Note on operating and pilot medium	Lubricated operation possible (in which case lubricated operation will always be required)
Corrosion resistance class CRC	3 - high corrosion stress
LABS (PWIS) conformity	VDMA24364-B1/B2-L
Ambient temperature	-20 °C ... 80 °C
Torque at nominal operating pressure and 0° swivel angle	70 Nm
Torque at nominal operating pressure and 50° swivel angle	37.5 Nm
Torque at nominal operating pressure and 90° swivel angle	55 Nm
Spring return torque at 0° swivel angle	30 Nm
Spring return torque at 50° swivel angle	22.5 Nm
Spring return torque at 90° swivel angle	45 Nm
Spring strength	3
Air consumption at 0.6 MPa (6 bar, 87 psi) per cycle 0°-nominal swivel angle-0°	2.31 l
Product weight	4500 g
Shaft connection	T14
Pneumatic connection	G1/8
Note on materials	RoHS-compliant
Material cover	High-alloy stainless steel
Material number cover	1.4408
Material seals	FPM NBR PUR
Material housing	High-alloy stainless steel
Material number housing	1.4408
Material screws	High-alloy stainless steel
Material shaft	High-alloy stainless steel
Material number shaft	1.4301