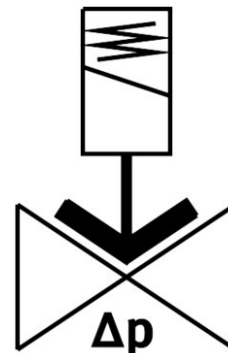
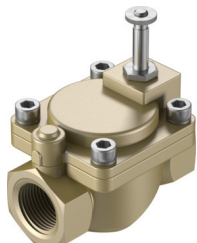



Solenoid valve VZWM-L-M22C-G112-F5

Part number: 546152

FESTO



 General operating condition

Data sheet

| Feature | Value |
|--|---|
| Design | servo-controlled |
| Type of actuation | Electric |
| Sealing principle | Soft |
| Mounting position | Preferably vertical |
| Type of mounting | In-line installation |
| Connection Process valve | G1 1/2 |
| Electrical connection | Solenoid coil type MH-..., coil can be ordered as an accessory |
| Nominal size | 40 mm |
| Valve function | 2/2-way, closed, monostable |
| Flow direction | Non-reversible |
| Medium | Compressed air to ISO 8573-1:2010 [7:4:4] Inert gases Water Neutral fluids |
| Medium pressure, valve for liquid media | 0.07 MPa ... 0.6 MPa |
| Medium pressure, valve for liquid media | 0.7 bar ... 6 bar |
| Medium pressure, valve for liquid media | 10.15 psi ... 87 psi |
| Medium pressure, valve for gaseous media | 0.07 MPa ... 1 MPa |
| Medium pressure, valve for gaseous media | 0.7 bar ... 10 bar |
| Medium pressure, valve for gaseous media | 10.15 psi ... 145 psi |
| Burst pressure | 4 MPa |
| Burst pressure | 40 bar |
| Burst pressure | 580 psi |
| Overload pressure | 4 MPa |
| Overload pressure | 40 bar |
| Overload pressure | 580 psi |
| Pressure difference | 0.07 MPa |
| Pressure difference | 0.7 bar |
| Pressure difference | 10.15 psi |
| Type of piloting | Pilot actuated |

| Feature | Value |
|---|--|
| Symbol | 00995681 |
| Max. viscosity | 22 mm ² /s |
| Media temperature | -10 °C ... 60 °C |
| Media temperature for fluids | 5 °C ... 50 °C |
| Ambient temperature | -10 °C ... 60 °C |
| Flow rate Kv | 27.4 m ³ /h |
| Standard nominal flow rate (standardised to DIN 1343) | 26400 l/min |
| Switching time on | 26 ms |
| Switch-on time for fluids | 1400 ms |
| Switching time off | 20 ms |
| Switch-off time for fluids | 2000 ms |
| b value | 0.67 |
| C value | 82 l/sbar |
| Note on materials | RoHS-compliant |
| LABS (PWIS) conformity | VDMA24364 zone III |
| Material housing | Brass |
| Material number housing | 2.0402 |
| Material seals | NBR |
| Material plunger tube | High-alloy steel |
| Product weight | 2570 g |
| CE mark (see declaration of conformity) | In accordance with EU Pressure Equipment Directive |
| UKCA marking (see declaration of conformity) | to UK Pressure Equipment Regulations |
| Corrosion resistance class CRC | 1 - Low corrosion stress |
| Max. tightening torque for cover screw | 30 Nm |
| Max. tightening torque for connecting thread | 540 Nm |
| Max. tightening torque for coil fastening | 2 Nm |