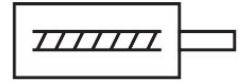
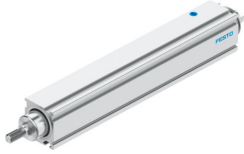



Electric drive EPCC-BS-25-50-6P-A

Part number: 5428814

FESTO



 General operating condition

Data sheet

Feature	Value
Size	25
Stroke	50 mm
Stroke reserve	0 mm
Piston rod thread	M6
Reversing backlash theoretical	100 µm
Spindle diameter	6 mm
Spindle pitch	6 mm/U
Torsional backlash at piston rod +/-	1 deg
Mounting position	optional
Piston-rod end	Male thread
Type of motor	Stepper motor Servo motor
Position detection	Via proximity switch
Design	Electric cylinder With ball screw drive
Spindle type	Ball screw drive
Symbol	00991941
Protection against torque/guide	With plain-bearing guide
Max. acceleration	15 m/s ²
Max. rotational speed	4000 rpm
Max. speed	0.4 m/s
Max. homing speed	0.01 m/s
Repetition accuracy	±0.02 mm
Duty cycle	100%
Corrosion resistance class CRC	0 - No corrosion stress
LABS (PWIS) conformity	VDMA24364 zone III
Suitability for the production of Li-ion batteries	Suitable for battery production according to the Festo internal definition of the degree of severity F1A with restrictions regarding the use of Cu/Zn/Ni
Cleanroom class	Class 9 according to ISO 14644-1
Storage temperature	-20 °C ... 60 °C
Relative air humidity	0 - 95% Non-condensing
Degree of protection	IP40
Ambient temperature	0 °C ... 60 °C
Impact energy in end positions	0.0012 J
Max. drive torque	0.1 Nm

Feature	Value
Max. moment Mx	0 Nm
Max. moment My	0.6 Nm
Max. moment Mz	0.6 Nm
Max. radial force at drive shaft	30 N
Max. feed force Fx	75 N
Frictional torque independent of load	0.055 Nm
Reference value effective load, horizontal	12 kg
Reference value effective load, vertical	6 kg
Mass moment of inertia JH per metre of stroke	0.0095 kgcm ²
Mass moment of inertia JL per kg of working load	0.0091 kgcm ²
Mass moment of inertia JO	0.0014 kgcm ²
Maintenance interval	Life-time lubrication
Moving mass for 0 mm stroke	53 g
Additional moving mass per 10 mm stroke	2.6 g
Basic weight for 0 mm stroke	132 g
Additional weight per 10 mm stroke	13 g
Type of mounting	With accessories
Note on materials	RoHS-compliant
Material housing	Smooth anodised
Material piston rod	High-alloy stainless steel
Material spindle nut	Steel
Material spindle	Rolled steel