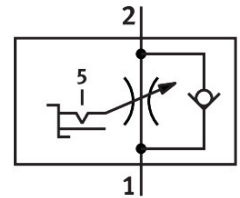


# One-way flow control valve GRLSA-1/4-QS-8

Part number: 540662

**FESTO**



 General operating condition

## Data sheet

Feature	Value
Valve function	Exhaust air one-way flow control function
Pneumatic connection, port 1	QS-8
Pneumatic connection, port 2	G1/4
Type of actuation	Manual
Adjustment component	Internal hexagon
Type of mounting	Screw-in
Standard nominal flow rate in flow control direction	0 l/min ... 450 l/min
Standard nominal flow rate in blocked direction	390 l/min ... 570 l/min
Ambient temperature	-10 °C ... 60 °C
Mounting position	optional
Symbol	00991475
Operating pressure complete temperature range	0.2 bar ... 10 bar
Standard flow rate in flow control direction 0.6-10 MPa (6-10 bar, 87-10 psi)	0 l/min ... 700 l/min
Standard flow rate in non-return direction 0.6-10 MPa (6-10 bar, 87-10 psi)	820 l/min ... 930 l/min
Operating medium	Compressed air to ISO 8573-1:2010 [7:4:4]
Note on operating and pilot medium	Lubricated operation possible (in which case lubricated operation will always be required)
LABS (PWIS) conformity	VDMA24364-B2-L
Cleanroom class	Class 4 according to ISO 14644-1
Storage temperature	-10 °C ... 40 °C
Media temperature	-10 °C ... 60 °C
Nominal torque	11 Nm
Tolerance for nominal tightening torque	± 10%
Product weight	34.8 g
Material seals	NBR
Material hollow bolt	Wrought aluminium alloy Anodised
Material release ring	POM
Material adjusting screw	PA-reinforced
Material swivel fitting	Die-cast zinc