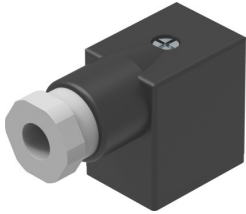


# Plug socket MSSD-F-M16

Part number: 539710

FESTO



 General operating condition

## Data sheet

Feature	Value
Frequency of connection	50
Cable outlet	Angled
Note on cable outlet	180° rotatable
Product weight	35 g
Electrical connection 1, design	Angular
Electrical connection 1, connection type	Socket
Electrical connection 1, connector system	Plug pattern type B to industry standard, 11 mm
Electrical connection 1, number of connections/cores	3
Electrical connection 1, type of mounting	On solenoid valve via M3 central screw
Electrical connection 1, connection pattern	00995619
Electrical connection 2, connector system	Screw terminal
Operational voltage range DC	0 V ... 250 V
Operational voltage range AC	0 V ... 250 V
Current rating at 40° C	6 A
Immunity to surge	2 kV
Protective conductor connection	Available
Cable fitting	M16x1.5
Cable diameter	6 mm ... 8 mm
Nominal cross section conductor	≤0.75 mm <sup>2</sup>
Degree of protection	IP65
Note on degree of protection	In assembled state
Ambient temperature	-20 °C ... 115 °C
LABS (PWIS) conformity	VDMA24364-B2-L
Note on materials	RoHS-compliant
Pollution degree	3
Corrosion resistance class CRC	1 - Low corrosion stress
Material housing	PA-reinforced
Housing colour	Black
Material seals	HNBR