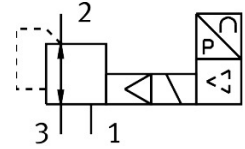


Proportional-pressure regulator VPPE-3-1/8-6-010

Part number: 539639

FESTO



[General operating condition](#)

Data sheet

Feature	Value
Nominal size, supply	5 mm
Nominal size, exhaust	2.5 mm
Type of actuation	Electric
Sealing principle	Soft
Mounting position	optional Preferably vertical
Design	Piloted piston regulator
Short circuit current rating	For all electrical connections
Safety instructions	Safety position VPPE: if the power supply cable is interrupted, output pressure is maintained unregulated.
Symbol	00995303
Reverse polarity protection	For all electrical connections
Valve function	3-way proportional-pressure regulator, closed
Operating pressure	0.8 MPa
Operating pressure	≤8 bar
Pressure regulation range	0.015 MPa ... 0.6 MPa
Pressure regulation range	0.15 bar ... 6 bar
Inlet pressure 1	6 bar ... 8 bar
Inlet pressure 1	0.6 MPa ... 0.8 MPa
Max. pressure hysteresis	0.015 MPa
Max. pressure hysteresis	0.15 bar
Standard nominal flow rate (standardised to DIN 1343)	850 l/min
Switching time off	1300 ms
Switching time on	550 ms
Operational voltage range DC	21.6 V ... 26.4 V
Max. current consumption	150 mA
Max. electrical power consumption	3.6 W
Residual ripple	10 %
SETPOINT/ACTUAL values	Voltage type 0 - 10 V
Operating medium	Compressed air to ISO 8573-1:2010 [7:4:4] Inert gases
Note on operating and pilot medium	Lubricated operation not possible
Approval	RCM trademark c UL us listed (OL)
KC mark	KC-EMV

Feature	Value
CE mark (see declaration of conformity)	To EU EMC Directive In accordance with EU RoHS Directive
UKCA marking (see declaration of conformity)	To UK instructions for EMC To UK RoHS instructions
Certificate issuing authority	UL E322346
Corrosion resistance class CRC	2 - Moderate corrosion stress
LABS (PWIS) conformity	VDMA24364-B2-L
Media temperature	10 °C ... 50 °C
Degree of protection	IP65
Ambient temperature	10 °C ... 50 °C
Product weight	445 g
Linearity	1 %FS
Hysteresis	2.5 %FS
Reproducibility	0.5 %FS
Total accuracy	2.25%FS
Temperature coefficient	0.04 %/K
Electrical connection	4-pin M12x1 Plugs Round design
Type of mounting	With through-hole
Pneumatic connection, port 1	G1/8
Pneumatic connection, port 2	G1/8
Note on materials	RoHS-compliant
Material housing	Wrought aluminium alloy
Material membrane	NBR