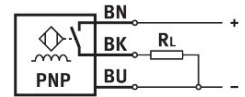
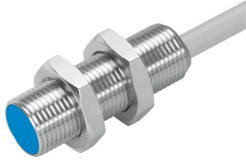


# Proximity sensor SIEH-M12B-PS-K-L-CR

Part number: 538252

**FESTO**



[General operating condition](#)

## Data sheet

Feature	Value
Conforms to standard	EN 60947-5-2
Symbol	00991702
Approval	RCM trademark c UL us listed (OL)
CE mark (see declaration of conformity)	To EU EMC Directive In accordance with EU RoHS Directive
UKCA marking (see declaration of conformity)	To UK instructions for EMC (UK-E) To UK RoHS instructions (UK-R)
Rated operating distance	6 mm
Assured operating distance	4.86 mm
Reduction factors	Aluminium = 1.0 Stainless steel, 1 mm thick = 0.45 Stainless steel, 2 mm thick = 0.9 Copper = 0.85 Brass = 1.3 Steel St 37 = 1.0
Ambient temperature	-25 °C ... 70 °C
Switching output	PNP
Switching element function	N/O contact
Reproducibility of switching values FS	0.3 mm
Hysteresis	≤0.73 mm
Max. switching frequency	600 Hz
Max. output current	200 mA
Voltage drop	2 V
Inductive protective circuit	Integrated Output current < 100 mA And switching frequency < 10 Hz
Short circuit current rating	Pulsed
Operational voltage range DC	10 V ... 30 V
Residual ripple	20%
No-load supply current	<12 mA
Reverse polarity protection	For all electrical connections
Electrical connection 1, connection type	Cable
Electrical connection 1, connector system	Open end
Electrical connection 1, number of connections/cores	3
Material cable sheath	TPE-U(PUR)
Size	M12
Type of mounting	Via lock nut

Feature	Value
Mounting type	Flush
Product weight	90 g
Material housing	High-alloy steel
Switching status indication	Yellow LED
Ambient temperature with moving cable	-5 °C ... 70 °C
Degree of protection	IP67 IP69K
Housing pressure resistance	80 bar
Corrosion resistance class CRC	2 - Moderate corrosion stress
LABS (PWIS) conformity	VDMA24364-B2-L
Additional information for sensor selection	with increased sensing distance
Electrical output	PNP
Selection of sensor design	Stainless steel housing