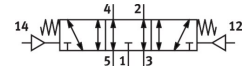
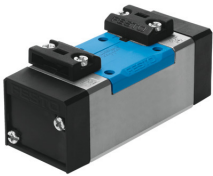


Pneumatic valve VL-5/3E-D-3-C-EX

Part number: 536024

FESTO



[PDF](#) General operating condition

Data sheet

| Feature | Value |
|---|---|
| Valve function | 5/3 exhausted |
| Type of actuation | Pneumatic |
| Construction width | 65 mm |
| Standard nominal flow rate (standardised to DIN 1343) | 4600 l/min |
| pneumatic working port | Sub-base size 3 to ISO 5599-1 G1/2 |
| Operating pressure | -0.09 MPa ... 1.6 MPa |
| Operating pressure | -0.9 bar ... 16 bar |
| Design | Piston gate valve |
| Type of reset | Mechanical spring |
| CE mark (see declaration of conformity) | To EU Explosion Protection Directive (ATEX) |
| UKCA marking (see declaration of conformity) | To UK EX instructions |
| ATEX category gas | II 2G |
| ATEX category dust | II 2D |
| Explosion ignition protection type for gas | Ex h IIC T4 Gb |
| Explosion ignition protection type for dust | Ex h IIIC T130°C Db |
| Explosion ambient temperature | -10 °C ≤ Ta ≤ +60 °C |
| Explosion protection certification outside the EU | EPL Db (GB) EPL Gb (GB) |
| Nominal size | 14.5 mm |
| Grid dimension | 71 mm |
| Exhaust-air function | With flow control option |
| Sealing principle | Soft |
| Mounting position | optional |
| Conforms to standard | ISO 5599-1 |
| Manual override | None |
| ISO code | 308 |
| Type of piloting | Direct |
| Flow direction | Reversible |
| Symbol | 00991021 |
| lap | Overlap |
| Pilot pressure | 3 bar ... 16 bar |
| Switching time off | 63 ms |
| Switching time on | 18 ms |

| Feature | Value |
|------------------------------------|---|
| Explosion protection | Zone 1 (ATEX) Zone 1 (UKEX) Zone 2 (ATEX) Zone 21 (ATEX) Zone 21 (UKEX) Zone 22 (ATEX) |
| Operating medium | Compressed air to ISO 8573-1:2010 [7:4:4] |
| Note on operating and pilot medium | Lubricated operation possible (in which case lubricated operation will always be required) |
| Vibration resistance | Transport application test with severity level 1 to FN 942017-4 and EN 60068-2-6 |
| Shock resistance | Shock test with severity level 2 to FN 942017-5 and EN 60068-2-27 |
| LABS (PWIS) conformity | VDMA24364-B1/B2-L |
| Media temperature | -10 °C ... 60 °C |
| Sound pressure level | 85 dB(A) |
| Pilot medium | Compressed air to ISO 8573-1:2010 [7:4:4] |
| Ambient temperature | -10 °C ... 60 °C |
| Product weight | 910 g |
| Type of mounting | On sub-base Via through-hole and screw |
| Pilot air port 12 | Sub-base size 3 to ISO 5599-1 |
| Pilot air port 14 | Sub-base size 3 to ISO 5599-1 |
| Pneumatic connection, port 1 | Sub-base size 3 to ISO 5599-1 |
| Pneumatic connection, port 2 | Sub-base size 3 to ISO 5599-1 |
| Pneumatic connection, port 3 | Sub-base size 3 to ISO 5599-1 |
| Pneumatic connection, port 4 | Sub-base size 3 to ISO 5599-1 |
| Pneumatic connection, port 5 | Sub-base size 3 to ISO 5599-1 |
| Note on materials | RoHS-compliant |
| Material seals | HNBR NBR |
| Material housing | Die-cast aluminium |