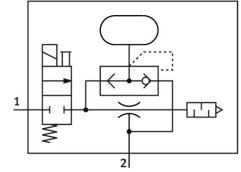


## Part number: 532623



## Data sheet

Feature	Value
Nominal size, Laval nozzle	0.45 mm
Grid dimension	14 mm
Silencer design	Open
Mounting position	optional
Ejector characteristic	Standard High suction volume
Manual override	Non-detenting
Integrated function	Ejector pulse valve, pneumatic Electric on-off valve Open silencer
Design	T-shape
Symbol	00991944
Valve function	2/2
Operating pressure for max. suction flow rate	5 bar
Operating pressure	2 bar ... 8 bar
Nominal operating pressure	6 bar
Max. suction flow rate against atmosphere	13.6 l/min
Air supply time at nominal operating pressure	1.97 s
Operational voltage range DC	21.6 V ... 26.4 V
Electrical power consumption	1.2 W
Duty cycle	100%
Operating medium	Compressed air to ISO 8573-1:2010 [7:4:4]
Note on operating and pilot medium	Lubricated operation not possible
Corrosion resistance class CRC	1 - Low corrosion stress
LABS (PWIS) conformity	VDMA24364-B1/B2-L
Media temperature	0 °C ... 50 °C
Sound pressure level at nominal operating pressure	52 dB(A)
Degree of protection	IP40
Ambient temperature	0 °C ... 50 °C
Product weight	62 g
Electrical connection	Plugs
Type of mounting	With through-hole With H-rail With accessories
Pneumatic connection, port 1	QS-6
Pneumatic connection, port 3	Open silencer

Feature	Value
Vacuum connection	QS-6
Material connecting thread	Anodised wrought aluminium alloy
Note on materials	RoHS-compliant
Material seals	NBR
Material receiver nozzle	POM
Material housing	POM-reinforced
Material silencer	PE
Material screws	Steel
Material transmitter nozzle	Wrought aluminium alloy
Material fitting	Brass Nickel-plated