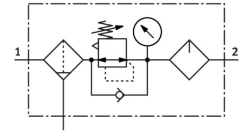


Service unit combination MSB6-1/2-FRC11:J9M2

Part number: 530234

FESTO



 General operating condition

Data sheet

| Feature | Value |
|---|--|
| Size | 6 |
| Series | MS |
| Actuator lock | Rotary knob with integrated lock |
| Mounting position | Vertical +/-5° |
| Condensate drain | Manually rotating |
| Design | Filter regulator with pressure gauge Proportional standard mist lubricator |
| Grade of filtration | 5 µm |
| Controller function | Output pressure constant Via primary pressure compensation With secondary venting With return flow function |
| Bowl guard | Integrated as metal bowl |
| Symbol | 00991761 |
| Pressure gauge (ANALOG) or Pressure display (DIGITAL) | With pressure gauge |
| Operating pressure | 1.5 bar ... 20 bar |
| Pressure regulation range | 0.5 bar ... 12 bar |
| Standard nominal flow rate (standardised to DIN 1343) | 3600 l/min |
| Operating medium | Compressed air to ISO 8573-1:2010 [-:4:-] Inert gases |
| Note on operating and pilot medium | Lubricated operation possible (in which case lubricated operation will always be required) |
| Corrosion resistance class CRC | 2 - Moderate corrosion stress |
| LABS (PWIS) conformity | VDMA24364-B1/B2-L |
| Storage temperature | -10 °C ... 60 °C |
| Suitable for use with food | See supplementary material information |
| Air purity class at output | Compressed air to ISO 8573-1:2010 [6:4:-] |
| Media temperature | -10 °C ... 60 °C |
| Ambient temperature | -10 °C ... 60 °C |
| Product weight | 1713 g |
| Type of mounting | With accessories |
| Pneumatic connection, port 1 | G1/2 |
| Pneumatic connection, port 2 | G1/2 |
| Note on materials | RoHS-compliant |