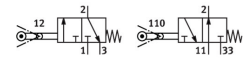


# Swivel lever valve RW/O-3-1/8

Part number: 4937

**FESTO**



[PDF General operating condition](#)

## Data sheet

Feature	Value
Valve function	3/2-way, monostable, open/closed
Type of actuation	Mechanical
Standard nominal flow rate (standardised to DIN 1343)	140 l/min
pneumatic working port	G1/8
Operating pressure	-0.95 bar ... 8 bar
Design	Piston seat
Nominal size	3.5 mm
Type of piloting	Direct
Symbol	00991835
Explosion protection	Zone 1 (ATEX) Zone 2 (ATEX) Zone 21 (ATEX) Zone 22 (ATEX)
Operating medium	Compressed air to ISO 8573-1:2010 [-:-:-]
Note on operating and pilot medium	Lubricated operation possible (in which case lubricated operation will always be required)
LABS (PWIS) conformity	VDMA24364-B1/B2-L
Ambient temperature	-10 °C ... 60 °C
Actuating force	28 N
Product weight	150 g
Type of mounting	With through-hole
Pneumatic connection, port 1	G1/8
Pneumatic connection, port 2	G1/8
Pneumatic connection, port 3	G1/8
Material seals	NBR
Material housing	Anodised aluminium