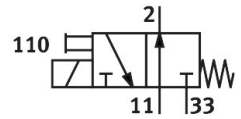


Solenoid valve MOFH-3-M5

Part number: 4543

FESTO



General operating condition

Data sheet

Feature	Value
Valve function	3/2 open, monostable
Type of actuation	Electric
Standard nominal flow rate (standardised to DIN 1343)	46 l/min
pneumatic working port	M5
Operating pressure	0 MPa ... 0.65 MPa
Operating pressure	0 bar ... 6.5 bar
Design	Poppet seat
Type of reset	Mechanical spring
Approval	c UL us - Recognized (OL)
Nominal size	1.5 mm
Exhaust-air function	Without flow control option
Sealing principle	Soft
Mounting position	optional
Manual override	Detenting
Type of piloting	Direct
Flow direction	Non-reversible
Symbol	00991322
Switching time off	8.5 ms
Switching time on	12 ms
Operating medium	Compressed air to ISO 8573-1:2010 [7:4:4]
Note on operating and pilot medium	Lubricated operation possible (in which case lubricated operation will always be required)
LABS (PWIS) conformity	VDMA24364-B2-L
Media temperature	-15 °C ... 60 °C
Ambient temperature	-15 °C ... 40 °C
Type of mounting	With through-hole
Pneumatic connection, port 1	M5
Pneumatic connection, port 2	M5
Pneumatic connection, port 3	M5