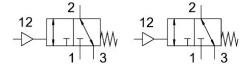
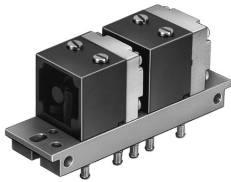


Pneumatic valve VL/O-3-PK-3X2

Part number: 4245

FESTO



[PDF](#) General operating condition

Data sheet

Feature	Value
Valve function	3/2 open, monostable
Standard nominal flow rate (standardised to DIN 1343)	100 l/min
pneumatic working port	PK-3
Operating pressure	0 bar ... 8 bar
Design	Poppet seat
Nominal size	2.5 mm
Symbol	00995570
Switching time off	50 ms
Switching time on	12 ms
Operating medium	Compressed air to ISO 8573-1:2010 [7:-:-]
Note on operating and pilot medium	Lubricated operation possible (in which case lubricated operation will always be required)
LABS (PWIS) conformity	VDMA24364-B1/B2-L
Pilot medium	Compressed air to ISO 8573-1:2010 [7:-:-]
Ambient temperature	-10 °C ... 60 °C
Product weight	180 g
Type of mounting	Either: On sub-base On mounting frame With through-hole
Pneumatic connection, port 1	PK-3
Pneumatic connection, port 4	PK-3
Pneumatic connection, port 5	PK-3
Material sub-base	Brass PPS reinforced
Material seals	NBR
Material housing	Die-cast zinc