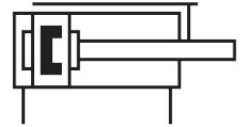
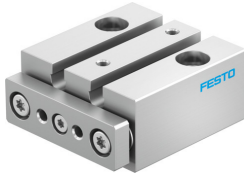


Guided drive DFM-6-10-P-A-GF

Part number: 4149945

FESTO



[PDF](#) General operating condition

Data sheet

| Feature | Value |
|--|--|
| Distance from centre of gravity of load to yoke plate xs | 10 mm |
| Stroke | 10 mm |
| Piston diameter | 6 mm |
| Operating mode, drive unit | Yoke |
| Cushioning | Elastic cushioning rings/plates at both ends |
| Mounting position | optional |
| Guide | Plain-bearing guide |
| Design | Guidance |
| Position detection | Via proximity switch |
| Symbol | 00991737 |
| Operating pressure | 0.2 MPa ... 0.8 MPa |
| Operating pressure | 2 bar ... 8 bar |
| Max. speed | 1.3 m/s |
| Mode of operation | Double-acting |
| Operating medium | Compressed air to ISO 8573-1:2010 [7:4:4] |
| Note on operating and pilot medium | Lubricated operation possible (in which case lubricated operation will always be required) |
| Corrosion resistance class CRC | 1 - Low corrosion stress |
| LABS (PWIS) conformity | VDMA24364-B1/B2-L |
| Cleanroom class | Class 6 according to ISO 14644-1 |
| Ambient temperature | -10 °C ... 60 °C |
| Impact energy in end positions | 0.012 J |
| Max. permissible torque load Mx as a function of stroke | 0.008 Nm |
| Max. effective load dependent upon stroke at defined distance xs | 0.85 N |
| Theoretical force at 0.6 MPa (6 bar, 87 psi), return stroke | 13 N |
| Theoretical force at 0.6 MPa (6 bar, 87 psi), advance stroke | 17 N |
| Torsional backlash | 0.1 deg |
| Moving mass | 9 g |
| Product weight | 33 g |
| Pneumatic connection | M3 |
| Note on materials | RoHS-compliant |
| Material cover | High-alloy stainless steel |
| Material seals | NBR |
| Material dynamic seals | HNBR |
| Material end plate | Anodised wrought aluminium alloy |
| Material guide rod | High-alloy stainless steel |

| Feature | Value |
|---------------------|----------------------------------|
| Material housing | Anodised wrought aluminium alloy |
| Material piston rod | High-alloy stainless steel |