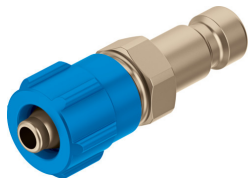



Quick coupling plug KS2-CK-3

Part number: 4091

FESTO



 [General operating condition](#)

Data sheet

Feature	Value
Nominal size	2 mm
Operating pressure complete temperature range	-0.095 MPa ... 1.2 MPa
Operating pressure complete temperature range	-0.95 bar ... 12 bar
Operating pressure complete temperature range	-13.775 psi ... 174 psi
Standard nominal flow rate (standardised to DIN 1343)	68 l/min ... 84 l/min
Nominal flow rate standardised according to ISO 8778	73.7 l/min ... 91.1 l/min
Operating medium	Compressed air to ISO 8573-1:2010 [7:-:-]
Note on operating and pilot medium	Lubricated operation possible
Corrosion resistance class CRC	1 - Low corrosion stress
LABS (PWIS) conformity	VDMA24364-B1/B2-L
Ambient temperature	-10 °C ... 60 °C
Product weight	4 g
Pneumatic connection, port 1	For tubing outer diameter of 4 mm For barbed fitting I.D. 3 mm with union nut
Material union nut	Wrought aluminium alloy, anodised
Note on materials	RoHS-compliant
Information on materials	Brass, nickel plated