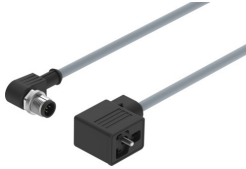


Connecting cable NEBV-B2W3-K-0.6-N-M12W3

Part number: 3579464

FESTO



 General operating condition

Data sheet

Feature	Value
Approval	c CSA us (OL)
Cable designation	Without inscription label holder
Product weight	100 g
Electrical connection 1, function	Field device side
Electrical connection 1, design	Angular
Electrical connection 1, connection type	Socket
Electrical connection 1, cable outlet	Angled
Electrical connection 1, connector system	Plug pattern type B to industry standard, 11 mm
Electrical connection 1, number of connections/cores	3
Electrical connection 1, used connections/cores	3
Electrical connection 1, type of mounting	On solenoid valve via M3 central screw
Electrical connection 1, connection pattern	00995628
Electrical connection 2, function	Controller side
Electrical connection 2, design	Round
Electrical connection 2, connection type	Plugs
Electrical connection 2, cable outlet	Angled
Electrical connection 2, connector system	M12x1, A-coded to EN 61076-2-101
Electrical connection 2, number of connections/cores	5
Electrical connection 2, used connections/cores	3
electrical connection 2, type of mounting	Screw lock with hex A/F13
Electrical connection 2, connection pattern	00995711
Operational voltage range DC	0 V ... 110 V
Nominal operating voltage DC	110 V
Operational voltage range AC	0 V ... 110 V
Nominal operating voltage AC	110 V
Current rating at 40° C	1 A
Immunity to surge	1.5 kV
Protective conductor connection	Available
Cable length	0.6 m
Cable characteristic	Standard
Test conditions cable	Test conditions on request
Cable diameter	5.9 mm
Cable diameter tolerance	± 0.3 mm
Cable structure	3 x 0.75 mm ²
Degree of protection	IP67
Note on degree of protection	In assembled state

Feature	Value
Ambient temperature	-25 °C ... 80 °C
Ambient temperature with moving cable	-25 °C ... 80 °C
CE mark (see declaration of conformity)	To EU Low Voltage Directive In accordance with EU RoHS Directive
UKCA marking (see declaration of conformity)	To UK RoHS instructions To UK regulations for electrical equipment
LABS (PWIS) conformity	VDMA24364 zone III
Note on materials	RoHS-compliant
Pollution degree	3
Corrosion resistance class CRC	2 - Moderate corrosion stress
Material cable sheath	TPE-U(PUR)
Cable sheath colour	Grey
Material housing	TPE-U(PUR)
Housing colour	Black
Material union nut	Die-cast zinc Nickel-plated
Material insulating sheath	PP