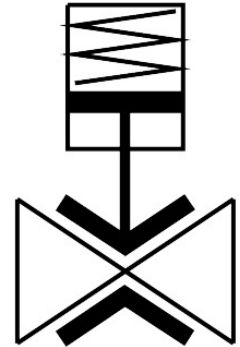



Pinch valve VZQA-C-M22C-...

Part number: 3174282

FESTO



 [General operating condition](#)

Data sheet

Overall data sheet – Individual values depend upon your configuration.

Feature	Value
Design	Pinch valve, pneumatically actuated
Type of actuation	Pneumatic
Sealing principle	Soft
Mounting position	optional
Type of mounting	In-line installation
Connection Process valve	Clamp to ASME-BPE, type A Clamp to ASME-BPE, type B Clamp to DIN 32676 series A G1/4 G1/2 G1 1/4 NPT 1/2 NPT 1 NPT
Nominal size DN	6 15 25
Valve function	2/2-way, closed, monostable
Flow direction	Reversible
Medium pressure	0 bar ... 6 bar
Note on the medium pressure	Use in the vacuum range was tested up to -0.09 MPa with the air at room temperature. Depending on the application, a counter-vacuum may have to be created on the control side to guarantee the media flow.
Operating pressure	3.5 bar ... 6 bar
Nominal pressure PN	10
Burst pressure	16 bar
Type of reset	Mechanical spring
Type of piloting	Externally controlled
Auxiliary pilot air port 12	M3 M5
Pilot medium	Compressed air to ISO 8573-1:2010 [7:4:1]
Symbol	00992981

Feature	Value
Medium	Compressed air to ISO 8573-1:2010 [-:::1] Water
Max. viscosity	4000 mm ² /s
Media temperature	-5 °C ... 100 °C
Ambient temperature	-5 °C ... 60 °C
Storage temperature	5 °C ... 30 °C
Flow rate Kv	0.7 m ³ /h ... 18 m ³ /h
Switching time on	125 ms ... 250 ms
Switching time off	125 ms ... 400 ms
Note on materials	RoHS-compliant
LABS (PWIS) conformity	VDMA24364 zone III
Material housing	High-alloy stainless steel
Material number housing	1.4301
Material housing cover	High-alloy stainless steel Wrought aluminium alloy
Material number housing cover	1.4404 / AISI 316L
Material seals	FPM
Material shut-off element	EPDM VMQ (silicone)
Product weight	137 g ... 2408 g
Suitable for use with food	See supplementary material information See declaration of conformity
Material bowl	PA6 PPS