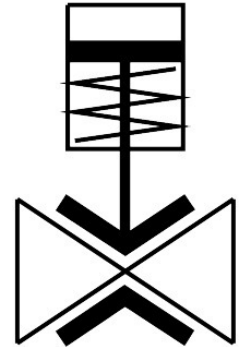



Pinch valve
VZQA-C-M22U-6-GG-V4V4E-4-EXA
 Part number: 2931686

FESTO



 [General operating condition](#)

Data sheet

| Feature | Value |
|-----------------------------|---|
| Design | Pinch valve, pneumatically actuated |
| Type of actuation | Pneumatic |
| Sealing principle | Soft |
| Mounting position | optional |
| Type of mounting | In-line installation |
| Connection Process valve | G1/4 |
| Nominal size DN | 6 |
| Valve function | 2/2 open, monostable |
| Flow direction | Reversible |
| Medium pressure | 0 MPa ... 0.4 MPa |
| Medium pressure | 0 bar ... 4 bar |
| Medium pressure | 0 psi ... 58 psi |
| Note on the medium pressure | Use in the vacuum range was tested up to -0.09 MPa with the air at room temperature. Depending on the application, a counter-vacuum may have to be created on the control side to guarantee the media flow. |
| Operating pressure | 0.1 MPa ... 0.65 MPa |
| Operating pressure | 1 bar ... 6.5 bar |
| Operating pressure | 14.5 psi ... 94.25 psi |
| Nominal pressure PN | 10 |
| Differential pressure | 0.25 MPa |
| Differential pressure | 2.5 bar |
| Differential pressure | 36.25 psi |
| Burst pressure | 1.6 MPa |
| Burst pressure | 16 bar |
| Burst pressure | 232 psi |
| Overload pressure | 0.78 MPa |
| Overload pressure | 7.8 bar |
| Overload pressure | 113.1 psi |
| Type of reset | Rebound resilience |
| Type of piloting | Externally controlled |

| Feature | Value |
|--|--|
| Auxiliary pilot air port 12 | M5 |
| Pilot medium | Compressed air to ISO 8573-1:2010 [7:4:1] |
| Symbol | 00995245 |
| Medium | Compressed air to ISO 8573-1:2010 [-::1] Water |
| Max. viscosity | 4000 mm ² /s |
| Media temperature | -5 °C ... 90 °C |
| Ambient temperature | -5 °C ... 60 °C |
| Storage temperature | 5 °C ... 20 °C |
| Flow rate Kv | 0.7 m ³ /h |
| Switching time on | 125 ms |
| Switching time off | 125 ms |
| Note on materials | RoHS-compliant |
| LABS (PWIS) conformity | VDMA24364 zone III |
| Suitability for the production of Li-ion batteries | Suitable for battery production according to the Festo internal definition of the degree of severity F1A with restrictions regarding the use of Cu/Zn/Ni |
| Material housing | High-alloy stainless steel |
| Material number housing | 1.4404 |
| Material housing cover | High-alloy stainless steel |
| Material seals | FPM |
| Material shut-off element | EPDM |
| Product weight | 163 g |
| Explosion protection | Zone 0 (ATEX) Zone 1 (ATEX) Zone 2 (ATEX) Zone 20 (ATEX) Zone 21 (ATEX) Zone 22 (ATEX) |
| Suitable for use with food | See supplementary material information |
| Material bowl | PPS |