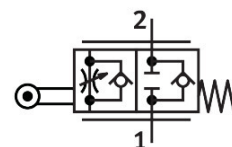



One-way flow control valve GRR-1/2

Part number: 2111

FESTO



 [General operating condition](#)

Data sheet

Feature	Value
Valve function	One-way flow control function
Pneumatic connection, port 1	G1/2
Pneumatic connection, port 2	G1/2
Adjustment component	Roller lever
Type of mounting	With through-hole
Standard nominal flow rate in flow control direction	1300 l/min
Standard nominal flow rate in blocked direction	1250 l/min
Operating pressure	0.3 bar ... 10 bar
Ambient temperature	-10 °C ... 60 °C
Material housing	Wrought aluminium alloy
Mounting position	optional
Symbol	00991465
Operating medium	Compressed air to ISO 8573-1:2010 [7:-:-]
Note on operating and pilot medium	Lubricated operation possible (in which case lubricated operation will always be required)
LABS (PWIS) conformity	VDMA24364-B2-L
Media temperature	-10 °C ... 60 °C
Product weight	735 g