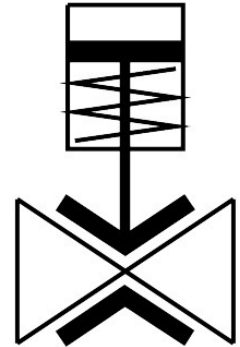


Pinch valve VZQA-C-M22U-...

Part number: 2037881

FESTO



General operating condition

Data sheet

Overall data sheet – Individual values depend upon your configuration.

Feature	Value
Design	Pinch valve, pneumatically actuated
Type of actuation	Pneumatic
Sealing principle	Soft
Mounting position	optional
Type of mounting	In-line installation
Connection Process valve	Clamp to ASME-BPE, type A Clamp to ASME-BPE, type B Clamp to DIN 32676 series A G1/4 G1/2 G1 1/4 NPT 1/2 NPT 1 NPT
Nominal size DN	6 15 25
Valve function	2/2 open, monostable
Flow direction	Reversible
Medium pressure	0 MPa ... 0.4 MPa
Medium pressure	0 bar ... 4 bar
Medium pressure	0 psi ... 58 psi
Note on the medium pressure	Use in the vacuum range was tested up to -0.09 MPa with the air at room temperature. Depending on the application, a counter-vacuum may have to be created on the control side to guarantee the media flow.
Operating pressure	0.1 MPa ... 0.65 MPa
Operating pressure	1 bar ... 6.5 bar
Operating pressure	14.5 psi ... 94.25 psi
Nominal pressure PN	10
Burst pressure	1.6 MPa
Burst pressure	16 bar
Burst pressure	232 psi

Feature	Value
Overload pressure	0.78 MPa
Overload pressure	7.8 bar
Overload pressure	113.1 psi
Type of reset	Rebound resilience
Type of piloting	Externally controlled
Auxiliary pilot air port 12	M5 G1/8
Pilot medium	Compressed air to ISO 8573-1:2010 [7:4:1] Compressed air to ISO 8573-1:2010 [7:4:4]
Symbol	00995245
Medium	Compressed air to ISO 8573-1:2010 [-:::] Compressed air to ISO 8573-1:2010 [-:::1] Water
Max. viscosity	4000 mm ² /s
Media temperature	-5 °C ... 150 °C
Ambient temperature	-5 °C ... 60 °C
Storage temperature	5 °C ... 30 °C
Flow rate Kv	0.7 m ³ /h ... 18 m ³ /h
Switching time on	125 ms ... 250 ms
Switching time off	125 ms ... 250 ms
Note on materials	RoHS-compliant
LABS (PWIS) conformity	VDMA24364 zone III
Suitability for the production of Li-ion batteries	Suitable for battery production according to the Festo internal definition of the degree of severity F1A with restrictions regarding the use of Cu/Zn/Ni
Material housing	High-alloy stainless steel
Material housing cover	POM High-alloy stainless steel Wrought aluminium alloy
Material seals	FPM
Material shut-off element	EPDM NBR VMQ (silicone)
Product weight	56.5 g ... 1876 g
Suitable for use with food	See supplementary material information See declaration of conformity
Material bowl	PA6