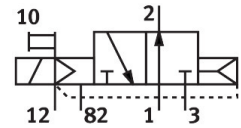
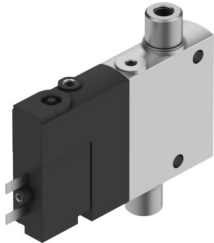


# Solenoid valve CPE10-M1BH-30LS-M5

Part number: 196854

**FESTO**



[General operating condition](#)

## Data sheet

| Feature   | Value  |
|---|--|
| Valve function  | 3/2 open, monostable                               |
| Type of actuation                                     | Electric   |
| Construction width                                    | 10 mm  |
| Standard nominal flow rate (standardised to DIN 1343) | 190 l/min  |
| pneumatic working port                                | M5   |
| Operating voltage                                     | 24V DC   |
| Operating pressure                                    | -0.09 MPa ... 1 MPa                                |
| Operating pressure                                    | -0.9 bar ... 10 bar                                |
| Design  | Piston gate valve                                  |
| Type of reset   | Pneumatic spring                                   |
| Approval  | c UL us - Recognized (OL)                          |
| Maritime classification                               | See certificate                                    |
| Certificate issuing authority                         | DNV-TAA000032X<br>UL MH19482                       |
| Degree of protection                                  | IP65<br>With plug socket<br>To IEC 60529           |
| Nominal size  | 4 mm   |
| Sealing principle                                     | Soft   |
| Mounting position                                     | optional   |
| Manual override                                       | Detenting via accessory<br>Non-detenting           |
| Type of piloting                                      | Pilot actuated                                     |
| Pilot air supply                                      | External   |
| Flow direction  | Non-reversible                                     |
| Symbol  | 00991402   |
| Valve position code                                   | Inscription label holder                           |
| lap   | Overlap  |
| Pilot pressure  | 0.25 MPa ... 0.8 MPa                               |
| Pilot pressure  | 2.5 bar ... 8 bar                                  |
| Switching time off                                    | 14 ms  |
| Switching time on                                     | 14 ms  |
| Duty cycle  | 100% in conjunction with holding current reduction |
| Max. positive test pulse with 0 signal                | 1200 µs  |
| Max. negative test pulse with 1 signal                | 900 µs   |
| Characteristic coil data                              | 24 V DC: 1.28 W                                    |

| Feature                            | Value  |
|------------------------------------|--|
| Permissible voltage fluctuations   | -15%/+10%  |
| Operating medium                   | Compressed air to ISO 8573-1:2010 [7:4:4]  |
| Note on operating and pilot medium | Lubricated operation possible (in which case lubricated operation will always be required) |
| Vibration resistance               | Transport application test with severity level 2 to FN 942017-4 and EN 60068-2-6           |
| Shock resistance                   | Shock test with severity level 2 to FN 942017-5 and EN 60068-2-27                          |
| Corrosion resistance class CRC     | 2 - Moderate corrosion stress  |
| LABS (PWIS) conformity             | VDMA24364-B1/B2-L  |
| Media temperature                  | -5 °C ... 50 °C  |
| Pilot medium                       | Compressed air to ISO 8573-1:2010 [7:4:4]  |
| Ambient temperature                | -5 °C ... 50 °C  |
| Electrical connection              | 2-pin  |
| Type of mounting                   | With through-hole  |
| Pilot exhaust port 82              | M3   |
| Pilot air port 12                  | M3   |
| Pneumatic connection, port 1       | M5   |
| Pneumatic connection, port 2       | M5   |
| Pneumatic connection, port 3       | M7   |
| Note on materials                  | RoHS-compliant   |
| Material seals                     | NBR  |
| Material housing                   | Die-cast aluminium   |