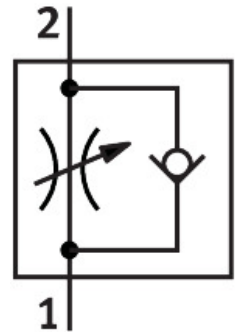


# One-way flow control valve GRLA-M3-QS-3

Part number: 175041

**FESTO**



 [General operating condition](#)

## Data sheet

Feature	Value
Valve function	Exhaust air one-way flow control function
Pneumatic connection, port 1	QS-3
Pneumatic connection, port 2	M3
Adjustment component	Slotted head screw
Type of mounting	Screw-in
Standard nominal flow rate in flow control direction	41 l/min
Standard nominal flow rate in blocked direction	27 l/min ... 50 l/min
Operating pressure	0.2 bar ... 10 bar
Ambient temperature	-10 °C ... 60 °C
Maritime classification	See certificate
Mounting position	optional
Symbol	00991452
Standard flow rate in flow control direction 0.6-10 MPa (6-10 bar, 87-10 psi)	95 l/min
Standard flow rate in non-return direction 0.6-10 MPa (6-10 bar, 87-10 psi)	75 l/min ... 110 l/min
Operating medium	Compressed air to ISO 8573-1:2010 [7:4:4]
Note on operating and pilot medium	Lubricated operation possible (in which case lubricated operation will always be required)
LABS (PWIS) conformity	VDMA24364-B1/B2-L
Cleanroom class	Class 4 according to ISO 14644-1
Media temperature	-10 °C ... 60 °C
Max. tightening torque	0.3 Nm
Product weight	7 g
Material screwed plug	Brass Nickel-plated
Note on materials	RoHS-compliant
Material seals	NBR
Material release ring	POM
Material adjusting screw	Brass

Feature	Value
Material swivel fitting	Die-cast zinc