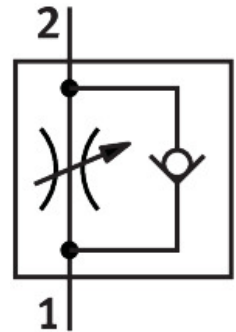


One-way flow control valve CRGRLA-M5-B

Part number: 161403

FESTO



[PDF](#) General operating condition

Data sheet

Feature	Value
Valve function	One-way flow control function
Pneumatic connection, port 1	M5
Pneumatic connection, port 2	M5
Type of actuation	Manual
Adjustment component	Slotted head screw
Type of mounting	Screw-in
Standard nominal flow rate in flow control direction	95 l/min
Standard nominal flow rate in blocked direction	77 l/min ... 95 l/min
Operating pressure	0.02 MPa ... 1 MPa
Operating pressure	0.2 bar ... 10 bar
Operating pressure	2.9 psi ... 145 psi
Ambient temperature	-20 °C ... 80 °C
Maritime classification	See certificate
Explosion protection	The information in the certificate must be observed! Zone 1 (ATEX) Zone 2 (ATEX) Zone 21 (ATEX) Zone 22 (ATEX)
Mounting position	optional
Symbol	00991452
Rotatability	360°/no continuous swivelling permissible
Standard flow rate in flow control direction 0.6-10 MPa (6-10 bar, 87-10 psi)	165 l/min
Standard flow rate in non-return direction 0.6-10 MPa (6-10 bar, 87-10 psi)	140 l/min ... 150 l/min
Operating medium	Compressed air to ISO 8573-1:2010 [7:4:4]
Note on operating and pilot medium	Lubricated operation possible (in which case lubricated operation will always be required)
LABS (PWIS) conformity	VDMA24364-B2-L
Suitability for the production of Li-ion batteries	Suitable for battery production according to the Festo internal definition of the degree of severity F1A with restrictions regarding the use of Cu/Zn/Ni

Feature	Value
Cleanroom class	Class 4 according to ISO 14644-1
Storage temperature	-10 °C ... 40 °C
Suitable for use with food	See supplementary material information
Media temperature	-10 °C ... 60 °C
Nominal size	2 mm
Max. tightening torque	1.5 Nm
Permissible actuation moment, regulating screw	0.2 Nm
Product weight	10.2 g
Note on materials	RoHS-compliant
Material seals	FPM PVC
Material hollow bolt	High-alloy steel
Material adjusting screw	High-alloy stainless steel
Material swivel fitting	High-alloy stainless steel