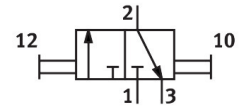
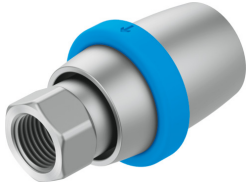



# Hand slide valve VBOH-32-G18

Part number: 1558073

**FESTO**



 [General operating condition](#)

## Data sheet

Feature	Value
Valve function	3/2 bistable
Pneumatic connection, port 1	G1/8
Pneumatic connection, port 2	G1/8
Type of actuation	Manual
Type of mounting	In-line installation Screw-in
Standard nominal flow rate (standardised to DIN 1343)	777 l/min
Nominal size	5.7 mm
Operating pressure	-0.095 MPa ... 1.2 MPa
Operating pressure	-0.95 bar ... 12 bar
Ambient temperature	-10 °C ... 80 °C
Material housing	Anodised wrought aluminium alloy
Operating medium	Compressed air to ISO 8573-1:2010 [7:4:4]
Grid dimension	24 mm
Instructions on use	Please only screw in fittings with a cylindrical thread. Mounting conical threads can damage the housing and cause clamping or malfunction of the sleeve.
Sealing principle	Soft
Mounting position	optional
Design	Sleeve valve
Type of piloting	Direct
Symbol	00991286
Note on operating and pilot medium	Lubricated operation possible (in which case lubricated operation will always be required)
Corrosion resistance class CRC	2 - Moderate corrosion stress
LABS (PWIS) conformity	VDMA24364-B2-L
Media temperature	-10 °C ... 80 °C
Actuating force	17 N
Product weight	17 g
Material screwed plug	Anodised wrought aluminium alloy
Note on materials	RoHS-compliant
Material seals	NBR