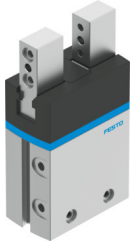


# Parallel gripper DHPS-20-A

Part number: 1254046

FESTO



 General operating condition

## Data sheet

Feature	Value
Size	20
Stroke per gripper jaws	6.5 mm
Max. replacement accuracy	≤0.2 mm
Max. angular gripper jaw backlash ax, ay	<0.5 deg
Max. gripper jaw backlash Sz	<0.02 mm
Rotationally symmetrical	≤0.2 mm
Repetition accuracy, gripper	<0.02 mm
Number of gripper jaws	2
Drive system	Pneumatic
Mounting position	optional
Mode of operation	Double-acting
Gripper function	Parallel
Gripper force back-up	None
Design	Force pilot operated motion sequence
Guide	Plain-bearing guide
Position detection	Via proximity switch
Symbol	00991894
Operating pressure	0.2 MPa ... 0.8 MPa
Operating pressure	2 bar ... 8 bar
Operating pressure	29 psi ... 116 psi
Max. operating frequency of gripper	3 Hz
Min. opening time at 0.6 MPa (6 bar, 87 psi)	59 ms
Min. closing time at 0.6 MPa (6 bar, 87 psi)	87 ms
Max. mass per external gripper finger	250 g
Operating medium	Compressed air to ISO 8573-1:2010 [7:4:4]
Note on operating and pilot medium	Lubricated operation possible (in which case lubricated operation will always be required)
Corrosion resistance class CRC	1 - Low corrosion stress
LABS (PWIS) conformity	VDMA24364-B2-L
Suitability for the production of Li-ion batteries	Metals with more than 5% by mass of copper are excluded from use. Exceptions are printed circuit boards, cables, electrical plug connectors and coils
Ambient temperature	5 °C ... 60 °C
Total gripping force, opening, 0.6MPa (6bar, 87 psi)	320 N
Total gripping force, closing, 0.6MPa (6bar, 87 psi)	290 N
Gripper force per gripper jaw, opening, 0.6 MPa (6 bar, 87 psi)	162 N

Feature	Value
Gripper force per gripper jaw, closing, 0.6 MPa (6 bar, 87 psi)	147 N
Mass moment of inertia	1.489 kgcm <sup>2</sup>
Max. force on gripper jaw Fz static	250 N
Max. torque at gripper Mx static	14 Nm
Max. torque at gripper My static	14 Nm
Max. torque at gripper Mz static	14 Nm
Lubrication interval for guide components	10 MioCyc
Product weight	380 g
Type of mounting	Either: Via female thread and centring sleeve Via through-hole and centring sleeve
Pneumatic connection	M5
Note on materials	RoHS-compliant
Material cover cap	PA
Material housing	Hard anodised wrought aluminium alloy
Material gripper jaws	High-alloy stainless steel